



NVIDIA Control Panel for Quadro Professional Drivers

DU-05524-346_v01 | December 19, 2014

User's Guide



TABLE OF CONTENTS

1 Introduction	1
About the NVIDIA Control Panel	2
Overview	2
Feature Differences from the Classic Control Panel	2
Changes in Release 346	3
Manage 3D Settings	3
Supported Operating Systems	3
Supported NVIDIA Products	3
Supported Languages	4
Other NVIDIA Software Applications	4
Getting Support and Information	5
Online Help	5
Technical Support	5
System Information	5
2 Understanding the NVIDIA Control Panel	6
Opening and Closing the New NVIDIA Control Panel	7
About the NVIDIA Control Panel Interface	8
Using the Main Task Area	9
Using the <i>Select a Task</i> Pane	9
Using the Tool Bar	10
Using the Menu Bar	10
File Menu	10
Edit Menu	11
Desktop Menu	11
Help Menu	12
Group-Specific Menus	13
3 Accomplishing NVIDIA Control Panel Tasks	15
Starting the NVIDIA Control Panel	16
Accomplishing NVIDIA Control Panel Tasks	17
NVIDIA Control Panel Feature List	17
NVIDIA Control Panel Groups	23
Using the Display Pages	23

TABLE OF CONTENTS

Using the Video Pages.....	24
Using the 3D Settings Pages.....	24
Using the Stereoscopic 3D Pages.....	24
Using the Mobile Pages.....	24
Using the Workstation Pages.....	25
Using the Networking Pages.....	25
Using the Storage Pages.....	26
Using the Performance Pages.....	26
Using the System Update Pages.....	26
A Using NVIDIA SLI Technology.....	27
Overview of SLI Technology for NVIDIA Quadro Cards.....	28
SLI Modes for NVIDIA Quadro GPUs.....	28
SLI Frame Rendering Mode.....	28
SLI Full Scene Antialiasing Mode.....	28
SLI Multi-View Mode.....	28
Hardware Requirements.....	29
Installation Instructions.....	30
Installing the Hardware.....	30
Installing the Display Driver.....	31
Using NVIDIA SLI Frame Rendering or SLI Antialiasing Modes.....	32
Enable SLI Mode.....	32
Selecting SLI Frame Rendering.....	33
SLI Frame Rendering for ACE-Detectable Applications.....	33
SLI Frame Rendering for Non-ACE Detectable Applications with no Global Preset.....	34
SLI Frame Rendering for Non-ACE Detectable Applications with a Global Preset (Windows XP Only).....	34
Using the Preset <i>3D App</i> Profiles.....	34
Selecting SLI Full-scene Antialiasing.....	35
Selecting SLI Single-GPU Mode.....	35
Viewing the SLI Visual Indicators.....	36
Using SLI Multi-View Mode.....	37
SLI Multi-OS - GPU Assignment in System Virtualization.....	38

TABLE OF CONTENTS

Mosaic Technology	38
B Multi-GPU Systems	39
Configuring Multi-GPU Displays in the NVIDIA Control Panel	40
Windows XP	40
Windows Vista/Windows 7	41
Understanding Multi-GPU Displays in the Windows Display Properties Settings Page	43
Overview of Dualview Monitors in a Multiple-GPU System	43
Monitor Order: Windows Vista Versus Windows XP	44
Monitor Ordering Under Windows XP	44
Monitor Ordering Under Windows Vista and Windows 7	44
Monitor Order Example	44
Monitor Icons: Windows Vista/7 Versus Windows XP	45
Monitor Icons Under Windows XP	45
Monitor Icons Under Windows Vista/Windows 7	45
Monitor Order Example	45
Monitor Icons: nView Clone and Spanning Mode	46
Determining GPU Order	47
Default GPU Order	47
Monitor Order After Changing the GPU Boot Priority in the BIOS	47
C Professional 3D Stereo	48
About Workstation 3D Stereo	48
Basic Workstation 3D Stereo Requirements	48
Using 3D Stereo under Different System Configurations	49
Supported Stereo Configurations Under Windows XP	49
Supported Stereo Configurations Under Windows Vista/Windows 7 .	50
Using Workstation 3D Stereo	50
Basic 3D Stereo Setup	50
Selecting the Stereo Display Mode	51
Using Workstation 3D Stereo with Multiple Displays	54
Enabling 3D Stereo with Multiple Displays	54
3D Stereo Under nView Modes	54

TABLE OF CONTENTS

3D Stereo Under Dualview Modes	54
D NVIDIA Application Configuration Engine	55
Introduction	56
Background	56
About NVIDIA ACE	56
Using ACE with Supported Applications	56
How to Determine ACE Support	56
Modifying Settings for ACE-detectable Applications	57
Using Applications that are not Supported by ACE	58
Setting Up an Application Profile Using Global Presets	58
About the Global Presets	59
Adding to the List of ACE-detectable Applications	61
Frequently Asked Questions	62

LIST OF FIGURES

Figure 2.1 NVIDIA Control (Windows Vista Example)	8
Figure 2.2 NVIDIA Control Panel <i>Select a Task</i> pane	9
Figure 2.3 Navigation History Menu	10
Figure A.1 SLI Visual Indicators	36
Figure B.1 Dualview Mode with Four Displays Attached.....	43
Figure B.2 nView Clone Mode and Spanning Mode	46
Figure D.1 Manage 3D Settings Page-ACE-detectable applications	57
Figure D.2 Manage 3D Settings Page-Applications with Global Profiles, Windows XP58	

LIST OF TABLES

Table 2.4	File Menu Commands	10
Table 2.5	Edit Menu Commands	11
Table 2.6	Desktop Menu Commands	11
Table 2.7	Help Menu Commands	12
Table 2.8	Display Menu Commands	13
Table 2.9	3D Settings Menu Commands	13
Table 2.10	Workstation Menu Commands	14
Table 3.1	NVIDIA Control Panel Features	17
Table B.1	Change Display Configuration Options	40
Table B.2	Windows Monitor Numbering Example-Four Connected Displays	44
Table B.3	Windows Monitor Numbering Example-Six Potential Displays	45
Table B.4	Windows Monitor Numbering Example-Default Boot Priority	47
Table B.5	Windows Monitor Numbering Example-PCI Boot Priority	47
Table C.1	Workstation Stereo Configurations: Windows XP	49
Table C.2	Workstation Stereo Configurations: Windows Vista/Windows 7	50
Table C.3	List of Supported Stereo Display Modes	51
Table D.1	Application-specific Global Presets (Not supported by ACE)	60

01 INTRODUCTION

This *quick start* is addressed to users of the NVIDIA® Control Panel software. This guide focuses on getting you up and running with your NVIDIA software.

For technical details on the features and benefits of the NVIDIA Control Panel software and details about supported products, drivers, and other software, refer to the NVIDIA web page — www.nvidia.com.

This chapter discusses the following major topics:

- ▶ “About the NVIDIA Control Panel” on page 2
- ▶ “Getting Support and Information” on page 5

About the NVIDIA Control Panel

Welcome to the NVIDIA Control Panel, designed for Microsoft® Windows®. You can use NVIDIA Control Panel to control your NVIDIA hardware and access other NVIDIA software installed on your system.

Overview

In addition to setting up basic display configurations such as display resolution, refresh rate, and multiple display use, you can:

- ▶ Tune your 3D settings with real-time preview to maximize performance or image quality
- ▶ Customize how 3D applications work in your system
- ▶ Adjust your screen colors and contrast
- ▶ Set custom timings
- ▶ Control video image settings
- ▶ Change your HDTV format
- ▶ Control your notebook system power using PowerMizer
- ▶ Control special workstation features such as Frame Synchronization.

Feature Differences from the Classic Control Panel

The following are features that were available in the NVIDIA classic control panel, but which are *not* available in the new NVIDIA Control Panel:

- ▶ Creating/Importing Color Profiles
- ▶ High Resolution Scalable Desktop
- ▶ Video Zoom
- ▶ Full-screen video mirroring
- ▶ Edge Blending
- ▶ nView Desktop Manager

nView Desktop Manager is available through the Windows control panel as a separate applet.

Changes in Release 346

Manage 3D Settings

Dynamic Super Resolution

- Added *Dynamic Super Resolution* setting for improved image quality in games. *Dynamic Super Resolution* produces smoother images by rendering a game at a higher resolution and then downscaling it to the native resolution of the display using advanced filtering.

Supported Operating Systems

NVIDIA Release 346 Quadro professional drivers are available for the following Microsoft® Windows® operating systems:

- Windows Vista 32-bit and 64-bit Editions
- Windows 7 32-bit and 64-bit Editions
- Windows 8 32-bit and 64-bit Editions
- Windows 8.1 32-bit and 64-bit Editions

Refer to the release notes for specific operating system support for individual driver versions.

Supported NVIDIA Products

Refer to the release notes and NVIDIA driver download site for the list of products supported by the driver version that you have installed on your computer.

Supported Languages

The NVIDIA Graphics Driver supports the following languages in the NVIDIA Control Panel:

English (USA)	German	Portuguese (Euro/Iberian)
English (UK)	Greek	Russian
Arabic	Hebrew	Slovak
Chinese (Simplified)	Hungarian	Slovenian
Chinese (Traditional)	Italian	Spanish
Czech	Japanese	Spanish (Latin America)
Danish	Korean	Swedish
Dutch	Norwegian	Thai
Finnish	Polish	Turkish
French	Portuguese (Brazil)	

Other NVIDIA Software Applications

If installed, other NVIDIA software that you can access from the NVIDIA Control Panel includes:

- ▶ NVIDIA System Tools–Performance group and System Update
- ▶ NVIDIA Stereoscopic 3D
- ▶ NVIDIA MediaShield™
- ▶ NVIDIA Network Access Manager

See the respective user documentation for information about these applications and instructions on how to use them.

Getting Support and Information

Online Help

- ▶ To open the online help, either :
 - Press **F1** on your keyboard, or
 - Select **Help** from the NVIDIA Control Panel menu bar and then select **NVIDIA Control Panel Help**.
- ▶ Help on various topics can be viewed using the Contents, Index, or Search tabs.

Technical Support

To access the NVIDIA Technical Support web page go the following web address:

<http://www.nvidia.com/page/support.html>

System Information

You can get detailed information about your system and the NVIDIA Control Panel configuration as well as version and copyright information.

- ▶ To view copyright and version information about the NVIDIA Control Panel:
 - From the **Help** menu, select **About NVIDIA Control Panel**.
- ▶ To view detailed system information:
 - Open the System Information dialog box by either selecting *System Information* from the **Help** menu, or by clicking the **System Information** link at the lower left corner of the NVIDIA Control Panel.
 - Click any of the tabs in the System Information dialog box.

02 UNDERSTANDING THE NVIDIA CONTROL PANEL

This chapter describes the NVIDIA Control Panel in the following sections:

- ▶ “Opening and Closing the New NVIDIA Control Panel” on page 7
- ▶ “About the NVIDIA Control Panel Interface” on page 8

Opening and Closing the New NVIDIA Control Panel

► You can open the NVIDIA Control Panel in several ways:

- Right-click the Windows desktop, then click **NVIDIA Control Panel** from the context menu, or

For Windows Vista/Windows 7

- From the *Classic View* of the Windows Control Panel, click the NVIDIA Control Panel icon, or

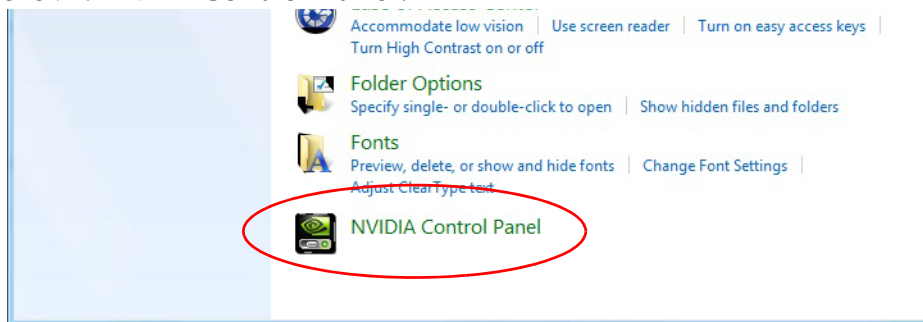


NVIDIA
Control Panel

- From the *Control Panel Home* view of the Windows Control Panel, click **Additional Options** and then click **NVIDIA Control Panel** from the Additional Options page.

For Windows 8

- From the Desktop, go to *Settings->Control Panel->Appearance and Personalization*, then click **NVIDIA Control Panel**.



► To close the NVIDIA Control Panel,

- From the **File** menu, select **Exit**, or
- Click the **Close** box in the upper right corner of the program window.

About the NVIDIA Control Panel Interface

The NVIDIA Control Panel provides an easy-to-use interface for managing your system.

When you start the program for the first time, the NVIDIA Control Panel opens to the first page listed in the navigation tree. On subsequent visits, the control panel reopens to the last page visited. The NVIDIA Control Panel user interface consists of these main areas, as shown in and [Figure 2.1](#):

- ▶ Main Task Area
- ▶ Select a Task (Navigation tree)
- ▶ Menu bar
- ▶ Toolbar

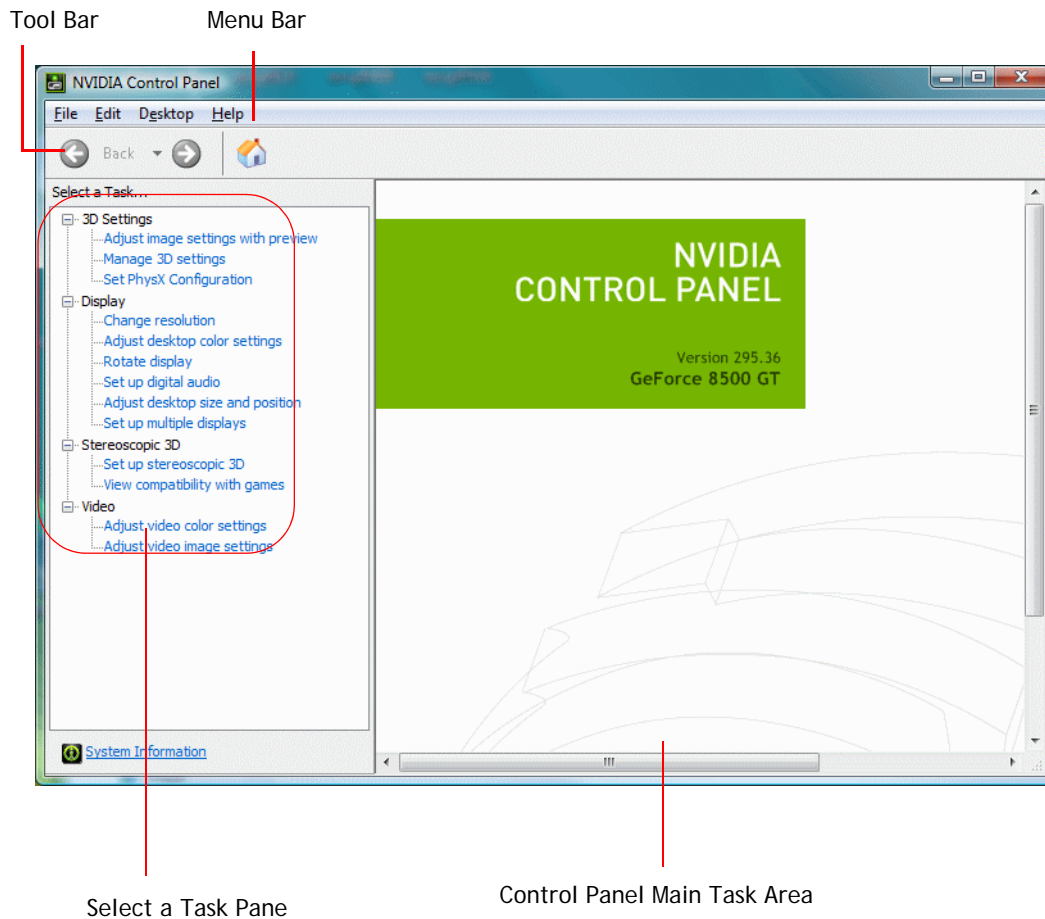


Figure 2.1 NVIDIA Control (Windows Vista Example)

Using the Main Task Area

The main task area, in the right pane, displays the application task pages. This area of the screen is where you will focus most of your attention as you use the NVIDIA Control Panel to accomplish your goals. You can access specific pages using the navigation tree in the *Select a Task* pane.

Depending on your PC manufacturer, there is a Welcome page that appears the first time you open the NVIDIA Control Panel after installing the driver. On subsequent visits, the control panel reopens to the last page visited.

Using the *Select a Task* Pane

The navigation tree in the *Select a Task* pane shows all the primary NVIDIA Control pages that are installed on your system.

The pages are grouped according to the same categories that existed in the previous version of the NVIDIA Control Panel.

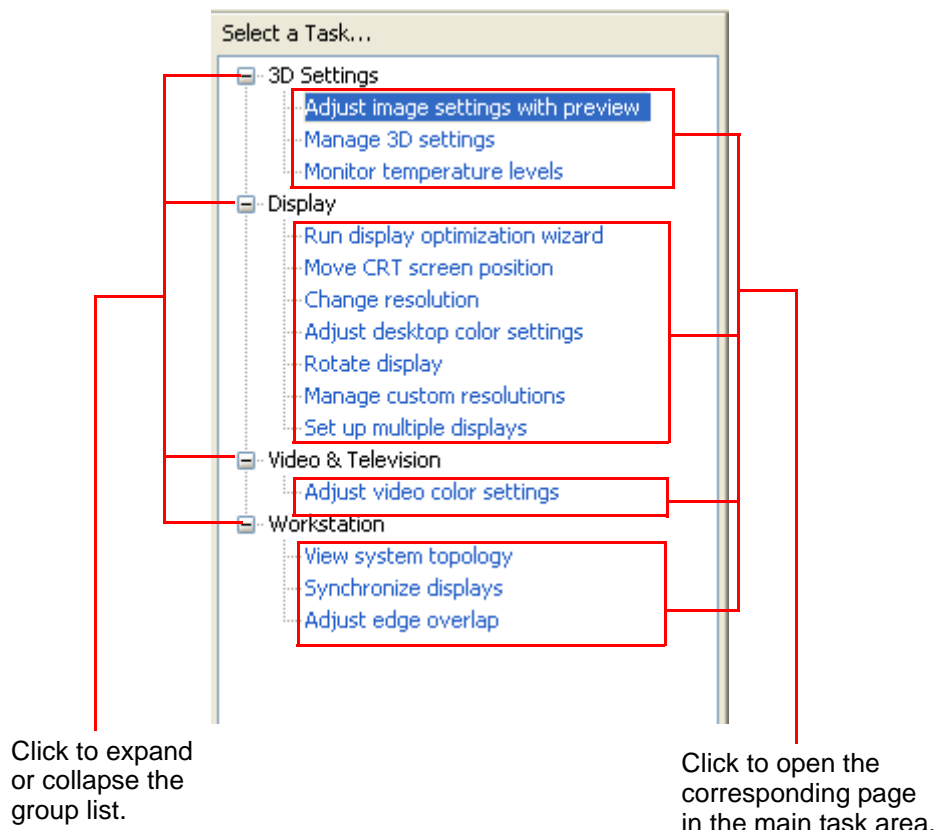


Figure 2.2 NVIDIA Control Panel *Select a Task* pane

Using the Tool Bar

The *Toolbar* provides quick back and forth navigation between pages. The back and forward buttons let you navigate sequentially among pages that you have visited.

You can also navigate directly to a previously visited page by clicking the list arrow next to the back button. The drop-down menu lists all the previously visited pages in the queue. Click the page that you want.

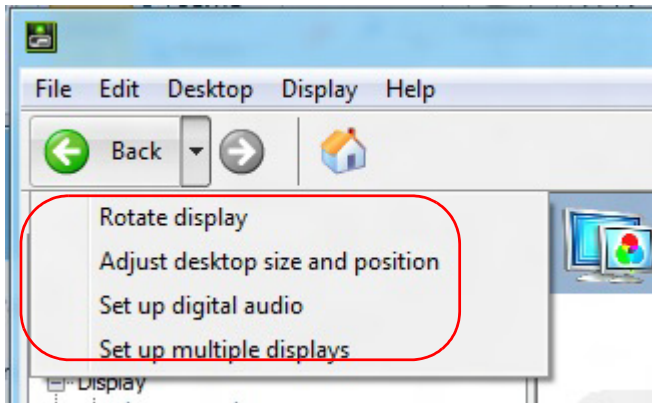


Figure 2.3 Navigation History Menu

Using the Menu Bar

The *Menu bar* contains standard Windows menus and menus specific to the NVIDIA Control Panel, such as the View and Profiles menus.

Menus that are available on the menu bar may vary, depending on the NVIDIA Control Panel group (such as, Display, Mobile, 3D Settings, or other group) you are using.

File Menu

Commands related to printing, applying changes, and exiting the program are available on the **File** menu.

Table 2.4 File Menu Commands

File Menu Command	Description
Page Setup ...	Set up the current task page for printing. <i>This control may not be available.</i>
Print...	Print the current task page. <i>This control may not be available.</i>
Print Preview....	Preview the page before sending it to the printer. <i>This control may not be available.</i>
Exit	Close the NVIDIA Control Panel program.

Edit Menu

Commands related to cutting, copying, pasting, and selecting items are available on the **Edit** menu.

Table 2.5 Edit Menu Commands

Edit Menu Command	Description
Cut	Cut the selected text and place in the clipboard. <i>This control may not be available.</i>
Copy	Copy the selected text and place in the clipboard. <i>This control may not be available.</i>
Paste	Paste the text currently in the clipboard to the location of the Windows cursor. <i>This control may not be available.</i>
Select All	Select all items on the current page. <i>This control may not be available.</i>

Desktop Menu

Commands related to viewing the various pages in the NVIDIA Control Panel application modules are available on the **Desktop** menu.

Table 2.6 Desktop Menu Commands

View Menu Command	Description
Add Desktop Context Menu	This is selected by default, and adds the NVIDIA Control Panel menu item to the desktop context menu.
Enable Video Editing Mode	Select this option to improve the video playback experience for some video editing applications.

Table 2.6 Desktop Menu Commands

View Menu Command	Description
Add "Run with graphics processor" Option	<p>Select this option to add "Run with graphics processor" to the program context menu.</p> <p>When this option is selected, you can choose which graphics processor to use when starting a program as follows:</p> <ol style="list-style-type: none"> 1. Right-click the program icon. 2. Click Run with graphics processor and then click the graphics processor to use. <p>The selection applies only at the time the program is launched.</p> <p>NOTE: This menu option appears only with systems using NVIDIA © Optimus™ technology.</p> <p>NOTE: Some programs require elevated user privileges in order to use the "Run on graphics processor" option from the program's right-click menu. A pop-up dialog will let you know if that is the case. In this case, use the controls in the NVIDIA Control Panel->Manage 3D Settings page to select the graphics processor.</p>
Display GPU Activity Icon in Notification Area	<p>Select this option so that the GPU Activity icon appears in the Windows notification area of the taskbar. You can then click the icon to see which programs and displays are using the NVIDIA GPU.</p> <p>NOTE: This menu option appears only with systems using NVIDIA® Optimus™ technology.</p>
Show Notification Tray Icon	<p>(Windows XP only) Select to show the NVIDIA Control Panel notification tray icon in the Windows taskbar notification area. Clicking the NVIDIA Control Panel notification icon offers a quick way to configure key NVIDIA Control Panel settings.</p>

Help Menu

Commands related to accessing help, system information, and copyright and version information are available on the **Help** menu.

Table 2.7 Help Menu Commands

Help Menu Command	Description
NVIDIA Control Panel Help	Access the NVIDIA Control Panel online help.
System Information	View detailed information about your system and the NVIDIA Control Panel configuration.

Table 2.7 Help Menu Commands

Help Menu Command	Description
About NVIDIA Control Panel	View NVIDIA Control Panel version and copyright information.

Group-Specific Menus

These menus appear only when pages from a specific group are open.

Display Menu

This menu item appears only when a Display group page is open.

Table 2.8 Display Menu Commands

Display Menu Command	Description
Identify Displays	Select to identify the displays configured with your system.
Show G-SYNC Visual Indicator	Select to verify that NVIDIA G-SYNC is being used.

3D Settings Menu

This menu item appears only when a 3D Settings group page is open on an SLI system.

Table 2.9 3D Settings Menu Commands

3D Settings Menu Command	Description
Show SLI Visual Indicators	Select to verify that SLI rendering or SLI antialiasing is enabled and working.
Show Multi-GPU Visual Indicator	Select to verify that multi-GPU rendering or multi-GPU antialiasing is enabled and working.
Show PhysX Visual Indicator	Select to verify the type of PhysX acceleration the game is using - CPU or GPU - or if PhysX acceleration is being used at all.

Workstation Menu

This menu item appears only when a Workstation group page is open.

Table 2.10 Workstation Menu Commands

Workstation Menu Command	Description
Refresh View	Select to refresh the graphical representation of the displays and graphics cards installed on your system.

03 ACCOMPLISHING NVIDIA CONTROL PANEL TASKS

This chapter provides instructions on how to use the NVIDIA Control Panel to accomplish common tasks. It contains the following sections:

- ▶ Starting the NVIDIA Control Panel
- ▶ Accomplishing NVIDIA Control Panel Tasks

Starting the NVIDIA Control Panel

1 Launch the NVIDIA Control Panel:

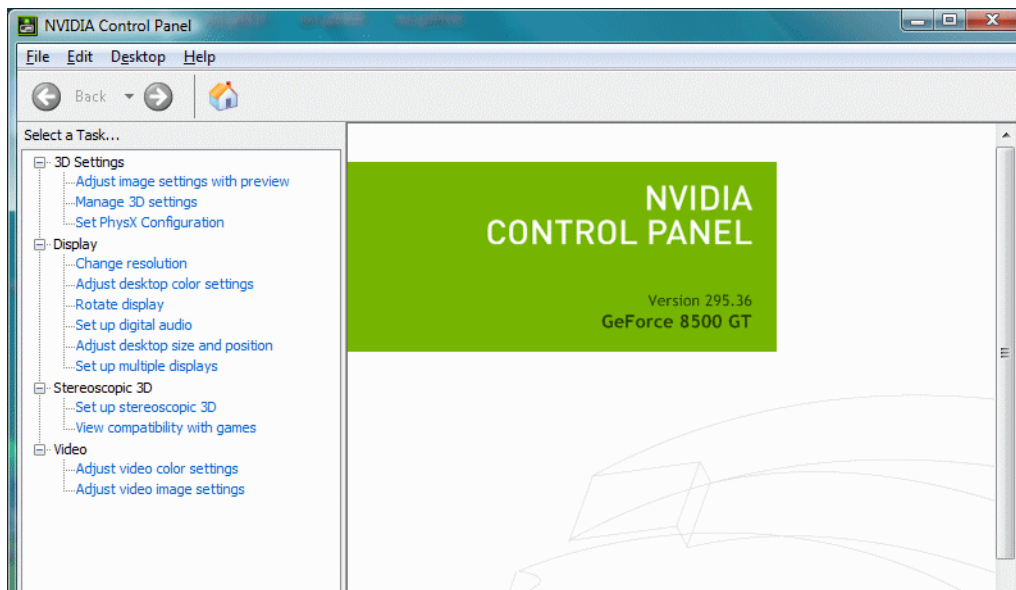
Under Windows Vista/Windows 7:

- Right-click the Windows desktop, then click **NVIDIA Control Panel** from the context menu, or
 - a Click the Start icon, then from the Start menu click **Control Panel**.
 - b From the *Classic View* of the Windows Vista Control Panel, click the NVIDIA Control Panel icon, or

From the *Control Panel Home* view of the Windows Vista Control Panel, click **Additional Options** and then click **NVIDIA Control Panel** from the Additional Options page.

Under Windows 8:

- Right-click the Windows desktop, then click **NVIDIA Control Panel** from the context menu, or
- From the Desktop, go to *Settings->Control Panel->Appearance and Personalization*, then click **NVIDIA Control Panel**.



The groups that appear in the *Select a Task* pane depend on the NVIDIA hardware software is installed on your system. For example, the Mobile group is not available on desktop systems.

2 From the navigation tree in the *Select a Task* pane, click one of the links to open a specific task page.

Each group in the navigation tree lists different tasks that you can accomplish, and each task page provides instructions on how to accomplish what you want. Move the cursor over listed options to see a description and typical usage scenario for that option. Detailed instructions for each task are also available through the online help.

Accomplishing NVIDIA Control Panel Tasks

The NVIDIA Control Panel provides an intuitive layout for locating graphics driver controls, including most of the controls that were available with the Classic NVIDIA Control Panel.

- “[NVIDIA Control Panel Feature List](#)” on page 17 lists the current features available in the NVIDIA Control Panel.
- “[NVIDIA Control Panel Groups](#)” on page 23 provides an overview of the NVIDIA Control Panel pages by group.

NVIDIA Control Panel Feature List

Table 3.1 NVIDIA Control Panel Features

Feature	Values (Default in bold) ⁱ	Notes
Display/TV Controls		
Mode control		
Resolution	Non-HD display - the native resolution or the highest safe resolution from the monitor EDID is the default. HD display - the highest progressive resolution is the default.	
Refresh rate		
Color depth/quality		
Custom timings/resolutions		
TV Signal Format Selection	M/NTSC, PAL, M/PAL, N/PAL, Select by country	
Connector Selection	Auto-select, DVI VGA S-Video - SDTV, Component Composite - SDTV, HDMI - HDTV (Vista and later), DisplayPort - HDTV (Vista and later), LVDS - laptop display	Available values depend on the actual connection.
Color Control		

Table 3.1 NVIDIA Control Panel Features

Feature	Values (Default in bold) ⁱ	Notes
Brightness	0 - 100%, (50%)	
Contrast	0 - 100%, (50%)	
Gamma	0.50 - 1.50, (1.00)	
Digital Vibrance	0 - 100%, (0%)	
Image sharpening	0 - 100%, (0%)	Not available with GeForce 8 series and later GPUs.
Hue	0 - 359 degrees (30)	For GeForce 8 series and later GPUs
Flicker Filter	0 - 100%, (50%)	For analog TVs
Gray border option	Disabled	For analog TVs; presents unused black TV borders as gray
Digital color format selection	RGB , YCbCr	For HDMI and DisplayPort connections
Content type (ITC) reported to the display	Auto select , Desktop programs, Full-screen videos, Photos, Movie, Games	Window Vista and later; Some HDMI displays only - available values dependent on display support
NVIDIA G-SYNC	Enable	
Rotation	0 , 90, 180, 270 degrees	
Desktop Size and Position		
Move CRT screen position		For VGA displays
Scaling mode	Aspect ratio Full-screen No scaling	TV, VGA (with EDID), Digital displays, LVDS
Scaling performed on	GPU Auto (Display/GPU combination)	
Application Scaling override	Off , On	
Resize		TV, Digital displays
Position		TV, VGA
Multi-display Options		
Single-display mode		
Dualview (extended mode)		
nView Clone Mode		

Table 3.1 NVIDIA Control Panel Features

Feature	Values (Default in bold) ⁱ	Notes
Pan and Scan Clone Mode		Windows 7 and later, NVIDIA Quadro 6000/5000/4000/2000/600 and later Quadro products.
Lock Clone Region (via right-click on a clone group)		Windows 7 and later, NVIDIA Quadro 6000/5000/4000/2000 and later Quadro products.
Video Controls	"Use video player settings" is the default. If "Use NVIDIA settings" is selected, the following values apply.	
Color Settings		
Brightness	0 - 100%, (50%)	
Contrast	0 - 100%, (50%)	
Hue	0 - 100%, (0%)	
Saturation	0 - 100%, (50%)	
Gamma (including separate RGB)	0.3 - 3.00, (1.00)	
Advanced Color Settings		
Dynamic Range	Full (0–255) Limited (16–235)	
Dynamic Contrast Enhancement	Disabled	GeForce 9 series and later GPUS
Color Enhancement	Disabled	GeForce 9 series and later GPUs
Image Settings		
Edge Enhancement	0 - 100%, (0%)	
Noise Reduction	0 - 100%, (0%)	
Inverse Telecine option	Disabled	
Internet Video Enhancement option	Disabled	Select GeForce 8 series and later GPUs
Digital Audio		
Verify displays that will appear as audio devices in the Windows Sound Settings	For each audio-capable display, select the display or select "Turn off audio".	For GPUs that support digital audio when an HDMI or DisplayPort connection is made.
Portal to the Windows Sound Settings panel		

Table 3.1 NVIDIA Control Panel Features

Feature	Values (Default in bold) ⁱ	Notes
HDCP		
Capability verification page		For GPUs that support HDCP.
3D Application Controls		
Ambient Occlusion	Off , Performance, Quality	Windows Vista and later; GeForce 8 series and later GPUs
Anisotropic filtering	Application-controlled , Off, card-specific settings	
Antialiasing - Mode	Application-controlled , Off, Enhance the application setting, Override any application setting	
Antialiasing - Setting	Application-controlled , card-specific settings	
Antialiasing - FXAA	Off , On	
Antialiasing line gamma	Off , On	
Antialiasing - gamma correction	Off , On	
Antialiasing - transparency	Off , Multisampling, supersampling	
Buffer-flipping mode	Auto-select , Block transfer	NVIDIA Quadro cards
CUDA - GPUs	[All CUDA-capable GPUs]	GeForce 8 series and later GPUs
Deep color for 3D applications	Allow , disable	
DSR Factors	OFF Available factors depend on system capability. Examples: 1.20x (native resolution) 1.50x (native resolution) 2.00x (native resolution) etc.	Fermi-based and later desktop GPUs. Windows 7 and later
DSR Smoothness	OFF 0 - 100%	Fermi-based and later desktop GPUs. Windows 7 and later
Enable Overlay	Off , On	NVIDIA Quadro cards Windows XP only

Table 3.1 NVIDIA Control Panel Features

Feature	Values (Default in bold) ⁱ	Notes
Exported pixel types	8-bpp and/or RGB555 format, None	NVIDIA Quadro cards
Maximum pre-rendered frames	0, 1, 2, 3 , 4, 5, 6, 7, 8	Limits frame pre-rendering
Multi-display/mixed-GPU acceleration	Single, Compatible, or Multiple display performance modes	
Multi-GPU performance mode	single-GPU, alternate frame rendering 1 & 2, split frame rendering, or multi-GPU antialiasing	
OpenGL Rendering GPU	Auto-select ,	NVIDIA Quadro FX or NVS cards
Power management mode	NVIDIA driver controlled , Adaptive, Prefer maximum performance, Prefer consistent performance	GeForce 9 series and later GPUs; Windows Vista and later; "NVIDIA Driver controlled" - Fermi, Kepler, and later GPUs
Preferred Refresh Rate	Application-controlled , Highest available	Windows Vista and later
SLI performance modes	single-GPU, alternate frame rendering 1 & 2, split frame rendering, or SLI antialiasing	
Stereo - Display mode	Select to match stereo viewing hardware	NVIDIA Quadro cards
Stereo - Enable	Off , On	NVIDIA Quadro cards
Stereo - Force shuttering	Off , On	NVIDIA Quadro cards
Stereo - Swap eyes	Off , On	NVIDIA Quadro cards
Stereo - Swap mode	Application Controlled , Per Eye, Per Eye-pair	NVIDIA Quadro cards Fermi and later GPUs
Texture filtering - anisotropic mip filter optimization	Off , On	
Texture filtering - anisotropic sample filter optimization	Off , On	
Texture filtering - Negative LOD bias	Allow , Clamp	
Texture filtering - Quality	High quality, Quality , Performance, High performance	Balance between quality and performance

Table 3.1 NVIDIA Control Panel Features

Feature	Values (Default in bold) ⁱ	Notes
Texture filtering - Trilinear optimization	Off, On	
Threaded optimization	Off, On	For systems with multiple CPUs
Triple buffering	Off, On	
Unified back/depth buffer	Off, On	NVIDIA Quadro cards Windows XP only
Vertical sync	Use the 3D application setting , Off, On, Adaptive, Adaptive (half refresh rate), G-SYNC	
PhysX Configuration		For systems with PhysX-capable GPUs, a minimum of 256MB dedicated graphics memory, and a minimum of 32 processor cores
SLI/Multi-GPU Configuration		For systems with SLI or multi-GPU ready GPUs.
3-way SLI Mode		
Quad SLI Mode		

- i. Defaults for the 3D application controls are for the Global Settings tab. Under the Program Settings tab, **Use global setting** is typically the default setting.

NVIDIA Control Panel Groups

This section provides an overview of the NVIDIA Control Panel groups.

- ▶ “Using the Display Pages” on page 23
- ▶ “Using the Video Pages” on page 24
- ▶ “Using the 3D Settings Pages” on page 24
- ▶ “Using the Stereoscopic 3D Pages” on page 24
- ▶ “Using the Mobile Pages” on page 24
- ▶ “Using the Workstation Pages” on page 25
- ▶ “Using the Networking Pages” on page 25
- ▶ “Using the Storage Pages” on page 26
- ▶ “Using the Performance Pages” on page 26
- ▶ “Using the System Update Pages” on page 26



Note: For Windows Versions - Support for some features under Windows Vista or Windows 7 is in development and may not be available with your GeForce graphics driver version. Consult the release notes for the latest list of unsupported features.

Using the Display Pages

The actual tasks available on your system depend on your system hardware, such as the number and type of displays connected. Use the Display group pages to:

- ▶ Run the wizard to optimize your display configuration.
- ▶ Change the display resolution.
- ▶ Change the scaling on your flat panel display.
- ▶ Adjust desktop color settings.
- ▶ Rotate the display.
- ▶ Adjust custom timings.
- ▶ Configure multiple displays, including Spanning or Clone modes.
Spanning modes are available only with Windows XP.
- ▶ Adjust your television picture quality and video color settings for the best possible viewing in its environment.
- ▶ Change the position and size of the desktop/video to best fit your television or HDTV (high definition television) screen.
- ▶ Change the signal format to use for your standard television or HDTV as well as change country-specific signal or the HDTV format.

- ▶ Verify the HDCP capability of your system.
- ▶ Access digital audio controls.

Using the Video Pages

The actual tasks available on your system depend on your system hardware, such as whether or not you have a TV connected and enabled. Use the Video page to:

- ▶ Adjust video and image color settings.

Using the 3D Settings Pages

The actual tasks available on your system depend on your system hardware, such as whether or not you have an SLI-ready system. Use the 3D Settings page to:

- ▶ Change the image and rendering settings of your 3D applications and games that utilize Direct3D and OpenGL technology.
- ▶ Assign specific 3D settings to a game so that these settings automatically load when a game is launched (available under Advanced view).
- ▶ Set up your SLI or multi-GPU configuration as well as PhysX configuration.

GPU temperature monitoring and GPU overclocking features are not included in the 3D Settings page. To use this functionality you must install NVIDIA nTune software.

Using the Stereoscopic 3D Pages

The Stereoscopic 3D pages are part of the NVIDIA 3D Vision software for viewing 3D programs and games in stereoscopic 3D. Use the Stereoscopic 3D pages to:

- ▶ Control stereoscopic 3D settings.
 - Enable stereoscopic 3D, adjust 3D depth, select a 3D laser sight, view and set the keyboard shortcuts, and run the setup wizard and various tests.
- ▶ View game compatibility.
 - See a stereoscopic 3D compatibility rating for a number of games, along with possible issues and recommendations for each game.

Using the Mobile Pages

The Mobile group is available if the NVIDIA software is installed on a notebook computer under Windows XP.

Use the Mobile page to extend your notebook computer's battery life using NVIDIA PowerMizer technology

Using the Workstation Pages

The Workstation group is available if you have an NVIDIA Quadro FX graphics card installed.

The actual tasks available depend on which NVIDIA Quadro FX product you have installed. Use the Workstation page to:

- ▶ Synchronize your displays using frame sync or genlock technology.
- ▶ View a graphical representation of the displays and graphics cards installed on your system.
- ▶ Manage serial digital interface (SDI) output (requires NVIDIA Quadro FX SDI solution.)
- ▶ Configure SLI Mosaic mode (requires Quadro Plex unit) to combine multiple displays into a larger virtual canvass.
- ▶ Configure ECC control on supported GPUs.
- ▶ Overlap the edges of adjacent displays.
Display edge *blending* is no longer available.

Using the Networking Pages

The Networking group pages are part of the nForce drivers Networking software for NVIDIA nForce-based PCs.

Use the Networking pages to optimize your network performance and increase your network bandwidth with the following technologies:

- ▶ **NVIDIA FirstPacket** offers a new way to manage the traffic on your personal computer, allowing you to more effectively manage and improve the performance of networked games and other applications that are sensitive to network delay (latency), such as Voice-over-IP (VoIP).
- ▶ **NVIDIA TCP/IP Acceleration** technology is a networking solution that moves the processing of TCP/IP network traffic from your computer's CPU to its nForce hardware resulting in greatly improved system performance.
- ▶ **NVIDIA Teaming** technology combines all the NVIDIA Ethernet interfaces on your system to form a team, resulting in increased bandwidth and network redundancy.
- ▶ **Alert Standard Format (ASF)** controls lets you set up alerts and remote system management in an OS-present or OS-absent environment.

Using the Storage Pages

The Storage group pages are part of the nForce drivers MediaShield Storage software for NVIDIA nForce-based PCs.

Use the Storage pages to

- ▶ Create and manage RAID 0, RAID 1, RAID 0+1, RAID 5, and spanning arrays.
- ▶ Run SMART tests on your RAID array disk drives.

Using the Performance Pages

The Performance group pages are part of the nForce drivers System Tools software for NVIDIA nForce-based PCs.

Use the Performance pages to:

- ▶ Manage system tuning and profiles for nForce MCP clocks, voltages, timings, and fans.
- ▶ Manage Enthusiast System Architecture (ESA) components.
- ▶ View detailed system information for your nForce-based PC.
- ▶ Overclock your GeForce GPU.

Using the System Update Pages

The System Update pages are part of the nForce drivers System Tools software for NVIDIA nForce-based PCs.

Use the system update pages to:

- ▶ Automatically check for nForce and GeForce driver updates.
- ▶ Update your system BIOS.
- ▶ Update firmware for the Enthusiast System Architecture (ESA) components.

APPENDIX A USING NVIDIA SLI TECHNOLOGY

NVIDIA SLI technology lets you install and benefit from two PCI Express (PCIe) graphics boards in a single PC. Just as dual processors or dual core CPUs improve computer performance, SLI allows dual GPUs (Graphics Processing Units) to significantly accelerate graphics performance.

This chapter explains how to install, configure, and use NVIDIA SLI graphics cards as supported in the Quadro Professional drivers.

- ▶ [“Overview of SLI Technology for NVIDIA Quadro Cards” on page 28](#)
- ▶ [“Installation Instructions” on page 30](#)
- ▶ [“Using NVIDIA SLI Frame Rendering or SLI Antialiasing Modes” on page 32](#)
- ▶ [“Viewing the SLI Visual Indicators” on page 36](#)
- ▶ [“Using SLI Multi-View Mode” on page 37](#)
- ▶ [“SLI Multi-OS – GPU Assignment in System Virtualization” on page 38](#)
- ▶ [“Mosaic Technology” on page 38](#)

Overview of SLI Technology for NVIDIA Quadro Cards

Professional users benefit by using SLI technology on dual NVIDIA Quadro GPUs to span an OpenGL window across multiple displays, or to run a single application on each GPU. The SLI connector offers dual GPU performance on a single display by leveraging the capabilities of two NVIDIA Quadro GPUs.

SLI Modes for NVIDIA Quadro GPUs

Following is a summary of the SLI functions available for NVIDIA Quadro GPUs:

SLI Frame Rendering Mode

SLI frame rendering combines two PCI Express graphics boards with an SLI connector to transparently scale application performance on a single display by presenting them as a single graphics card to the operating system. SLI frame rendering accelerates OpenGL operation in two different ways:

- ▶ **Split frame rendering:** In split-frame rendering (SFR), the display is split into distinct sections, and each section is sent to a different GPU. The resulting rendering is recomposed and displayed as a single contiguous frame. The position of the split is adjusted dynamically as the workload moves between the GPUs.

SFR typically benefits pixel-shader or texture-intensive operations and is used in the *3D App-Visual Simulation* profile.

- ▶ **Alternate frame rendering:** In alternate frame rendering (AFR), each GPU renders alternate frames of data from the application.

AFR typically benefits geometry-intensive operations and is used in the *3D Apps-Modeling AFR* profile. It is also the standard SLI frame rendering method for general use.

SLI Full Scene Antialiasing Mode

SLI antialiasing combines the power of two PCI Express graphics boards to offer higher quality antialiasing.

SLI Multi-View Mode

SLI multi-view combines the power of two NVIDIA Quadro PCI Express graphics boards to span a single hardware-accelerated OpenGL application window across multiple displays, run a single application per GPU with multiple display outputs, or enable other uses of two PCI Express graphics boards.

Hardware Requirements

To support NVIDIA SLI technology, the motherboard and system must include the following:

Motherboard

Your PC motherboard must be PCI Express-based, with two available and adjacent PCI Express expansion slots. Both slots must be x16 mechanical with the following allowed electrical slots:

- ▶ x16 + x16
- ▶ x16 + x8
- ▶ x16 + x4
- ▶ x8 + x8

Graphics Cards

NVIDIA SLI requires two SLI graphics cards.

▶ For SLI Frame Rendering or SLI Antialiasing

- Two identical NVIDIA Quadro FX 5800, 5600, 5500, 4800, 4600, 4500 X2, 4500, 3500, 3450, or 3400 graphics cards
- An SLI bridge connector (provided with your graphics board) must also be installed to utilize the full capabilities of SLI Frame Rendering.

▶ For SLI Multi-View

- Two identical NVIDIA Quadro FX 5800, 5600, 5500, 4800, 4600, 4500 X2, 4500, 3500, 3450, 3400, 1500, 1400, 560, 550 or 540 graphics cards

Power supply

- ▶ Some SLI-ready graphics boards require an external power cable.
- ▶ Since NVIDIA SLI technology supports up to two high-end graphics boards, the load on the system's power supply can increase significantly. A minimum of a 480W Power Supply Unit (PSU) is recommended.

An inadequate power supply will result in erratic and unpredictable system behavior.

See the [NVIDIA SLI website](#) for updated hardware requirements information.

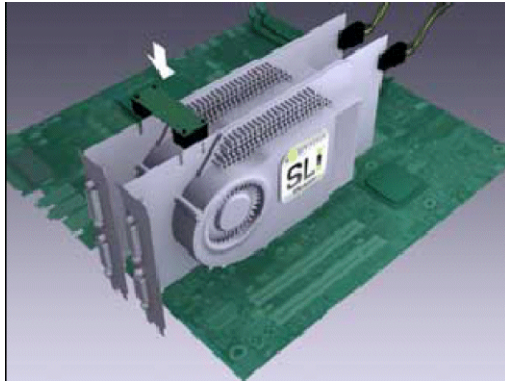
Installation Instructions

Before removing current graphics boards and installing two NVIDIA Quadro FX boards, please uninstall any current drivers and save on your Windows desktop the provided SLI drivers.

Installing the Hardware

Note: Perform the installation in a static safe environment and utilize a properly grounded anti-static wristband. Place any static sensitive components in anti-static bags.

- 1 Power off the system and remove the power cord from the power supply.
- 2 Gently remove or open the system enclosure.
Refer to owners manual that came with your computer.
- 3 Remove any non SLI-capable graphics boards that may occupy the x16 expansion slot and replace it with your NVIDIA SLI-ready graphics board.
- 4 Install the second SLI-capable graphics board in the adjacent slot.
You may also need to relocate a card. The chosen slot must be x16, x8 or x4 capable.
- 5 Connect the two graphics boards with the SLI bridge connector.



The SLI connector is required for SLI Frame Rendering and SLI Antialiasing.

- 6 If your graphics boards have an auxiliary power connector, connect them to the power supply using the supplied power connector cables.
- 7 Replace the system's cover and reconnect your display(s) to the SLI-ready graphics board installed in the x16 expansion slot.
- 8 Plug the power cable back into the system.

Installing the Display Driver

Follow the steps listed below to install your driver software:

- 1 Power on the system and log into Windows.
- 2 Cancel the Windows “Found New Hardware Wizard”.
This message should appear twice – once for each graphics board.
- 3 Run “setup.exe” for the SLI driver you saved to your desktop.
- 4 Follow the “**Next**” prompts to proceed with driver installation.
- 5 Once the software has been installed, choose “Yes, I want to restart my computer now” and select “**Finish**” to reboot the system.

See the following sections for instructions on using NVIDIA SLI Technology:

- ▶ “Using NVIDIA SLI Frame Rendering or SLI Antialiasing Modes” on page 32
- ▶ “Using SLI Multi-View Mode” on page 37

Using NVIDIA SLI Frame Rendering or SLI Antialiasing Modes

Note: Before enabling SLI technology, you must close any 3D applications that are using the NVIDIA driver. When SLI is enabled, the video driver is reset in order to enable the second GPU. If an application that uses the graphics driver is still open while the driver resets, this could result in a black screen or cause the system to hang.

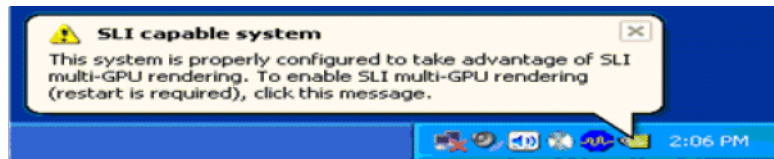
There are two basic steps for using SLI frame rendering and antialiasing modes:

- 1 **Enable SLI Mode**
- 2 Select the NVIDIA SLI mode to use:
 - **Selecting SLI Frame Rendering**
 - **Selecting SLI Full-scene Antialiasing**
 - **Selecting SLI Single-GPU Mode**

These steps are described in detail in the following sections.

Enable SLI Mode

- 1 After logging back on to Windows, you should see the message “SLI capable system” in the bottom right corner of the screen.



On some configurations, the message will state that SLI mode is automatically enabled. In that case you can skip the remaining instructions in this section and proceed to “**Selecting SLI Frame Rendering**” on page 33.

- 2 Click anywhere on the message.

If the message disappears before you can click it, continue with the following steps.
- 3 Right click the desktop and click **NVIDIA Control Panel**.
- 4 Under the **3D Settings** category, click **Set SLI configuration**.
- 5 Under **Select the SLI configuration**, click **Maximize 3D performance**.

If you plan to use SLI Mosaic mode, click **Allow SLI Mosaic Mode**.

The GPU configuration visualizer shows the pending SLI configuration as well as the display connections and enabled state of the displays. The SLI bar indicates the SLI mode (SLI, 3-way SLI, Quad SLI, or 4-way SLI) and points to the GPUs that are used for SLI.

- 6 Click **Apply**.

If you have more than one display connected,

Windows XP or pre-GeForce 8 series GPUs

You can select which display to use to view your game. Use the Set up multiple displays page to select which display to use as the primary display. The GPU connected to this display will function as the "primary" GPU, all others will function as slaves to the primary GPU.

If none of the displays in the SLI group are the primary display, then the driver will select which display to use to view SLI-accelerated games.

Windows Vista/Windows 7 and GeForce 8 series and later GPUs

You can select which display to use as the SLI focus display, or the display to which you want to apply full SLI acceleration for full-screen applications. Use the Set up multiple displays page to select which SLI display to use as the primary display. This becomes the SLI focus display.

If none of the displays in the SLI group are the primary display, then the driver will select which display to use as the SLI focus display.

To use SLI frame rendering or SLI antialiasing technology, you must configure the **SLI performance mode** as explained in the next section.

Selecting SLI Frame Rendering

The steps to set up SLI frame rendering depends on whether the application is ACE detectable or whether you are using Windows XP and a global preset exists for your application.

Refer to "NVIDIA Application Configuration Engine" on page 55 to determine which of the following steps to take:

- ▶ SLI Frame Rendering for ACE-Detectable Applications
- ▶ SLI Frame Rendering for Non-ACE Detectable Applications with no Global Preset
- ▶ SLI Frame Rendering for Non-ACE Detectable Applications with a Global Preset (Windows XP Only)

SLI Frame Rendering for ACE-Detectable Applications

- 1 From the NVIDIA Control Panel tool bar, switch to Advanced View and then click **Manage 3D Settings** from the *Select a Task* pane.
- 2 Click the Global Settings tab, and then click the **Global presets** list arrow and select **Base profile**.
- 3 Under the Settings Feature column, locate **SLI performance mode**, click its setting to activate the list box, then click **NVIDIA Recommended**.
- 4 Click **Apply**.

SLI Frame Rendering for Non-ACE Detectable Applications with no Global Preset

- 1 From the NVIDIA Control Panel tool bar, switch to Advanced View and then click **Manage 3D Settings** from the *Select a Task* pane.
- 2 Click the Global Settings tab, and then click the **Global presets** list arrow and select **Base profile**.
- 3 Under the Settings Feature column, locate **SLI performance mode**, click its setting to activate the list box, then click either an **AFR 1** or **AFR 2** option.

There may be subtle differences in performance between AFR 1 and AFR 2, depending on the application. You can try each one to determine which provides the best performance with the highest quality for your application.

- 4 Click **Apply**.

SLI Frame Rendering for Non-ACE Detectable Applications with a Global Preset (Windows XP Only)

- 1 From the NVIDIA Control Panel tool bar, switch to Advanced View and then click **Manage 3D Settings** from the *Select a Task* pane.
- 2 Click the Global Settings tab, and then click the **Global presets** list arrow and select the preset or profile for your application.

See also [Using the Preset 3D App Profiles](#) below.

- 3 Under the Settings Feature column, locate **SLI performance mode**, click its setting to activate the list box, then click **NVIDIA Recommended**.
- 4 Click **Apply**.

Using the Preset *3D App Profiles*

The following three preset application profiles for OpenGL applications are useful in SLI configurations:

► **3D App-Modeling AFR**

This preset is useful for modeling applications, and uses SLI AFR mode.

► **3D App-Visual Simulation**

This preset is useful for visual simulation applications, and uses SLI SFR mode.

► **3D App-Default Global Settings**

This preset uses SLI single-GPU rendering mode, and is also useful when you need to use non-SLI configurations.

To enable one of these profiles, click the **Global Settings** tab in the Manage 3D Settings page, then click the **Global presets** list arrow and click the profile you want to use.

Selecting SLI Full-scene Antialiasing

You can use SLI technology to provide higher-quality antialiasing beyond 16xFSAA. In this mode, SLI frame rendering is not available. To use SLI antialiasing, perform the following steps.

- 1 From the NVIDIA Control Panel tool bar, switch to Advanced View and then click **Manage 3D Settings** from the *Select a Task* pane.
- 2 Click the Global Settings tab, and then click the **Global presets** list arrow and select **Base profile**.
- 3 Select an SLI antialiasing setting.
Under the Settings Feature column,
 - a Locate **Antialiasing-Mode**, click its setting to activate the list box and then click **Enhance the application setting**.
 - b Locate **Antialiasing - Setting**, click its setting to activate the list box, then click the SLI antialiasing setting you want to use.
- 4 Click **Apply**.

Selecting SLI Single-GPU Mode

SLI single-GPU mode is the default setting, and provides improved performance at a level that assures compatibility with most applications. This is not the same as completely disabling SLI. If you are trying to solve a compatibility issue, you may want to completely disable SLI by clicking **Disable SLI** on the Manage 3D Settings->Set SLI Configuration page.

To use single GPU mode, perform the following steps.

- 1 From the NVIDIA Control Panel tool bar, switch to Advanced View and then click **Manage 3D Settings** from the *Select a Task* pane.
- 2 Click the Global Settings tab, and then click the **Global presets** list arrow and select **Base profile**.
- 3 Under the Settings Feature column, locate **SLI performance mode**, click its setting to activate the list box, then click **SLI single-GPU**.
- 4 Click **Apply**.

Viewing the SLI Visual Indicators

To verify that SLI mode is enabled and that the graphics cards are sharing the load,

- 1 From the NVIDIA Control Panel *Select a Task* pane, click **Set SLI configuration**.
- 2 From the menu bar, click **3D Settings**, then click the drop-down menu item **Show SLI Visual Indicators**.

This option enables an SLI status bar that reflects how the GPUs are working together to render DirectX and OpenGL full-screen applications. See [Figure A.1](#).

AFR load balancing bar shows relative work provided by each GPU.



SFR load balancing line shows relative portion of the screen rendered by each GPU.



SLI AA indicator shows the effect of SLI antialiasing modes.

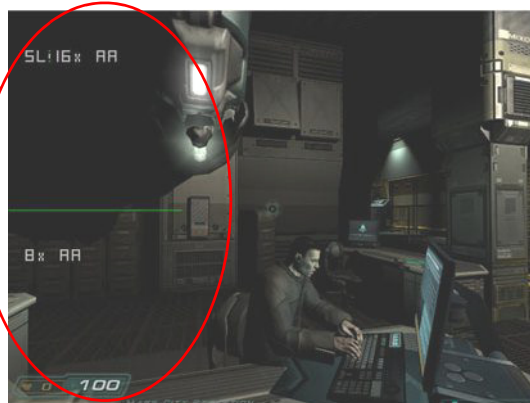


Figure A.1 SLI Visual Indicators

Using SLI Multi-View Mode

Under Windows XP, only one display is used with SLI frame rendering or SLI antialiasing mode. To use more than one display, you must use SLI multi-view mode as follows:

- 1 Right click the desktop and click **NVIDIA Control Panel**.
- 2 From the 3D Settings category in the *Select a task* pane, click **Set SLI configuration**.
- 3 Click **Disable SLI**, then click **Apply**.

If you were using SLI multi-view mode prior to enabling SLI frame rendering mode and you still have multiple displays connected, then the system returns to the previous multi-view mode, whether it was Dualview, Clone, or Spanning mode.

If you have only one display connected, then the system sets to single display mode. Continue with the following steps to use additional displays.

- 4 Close the NVIDIA Control Panel and then connect the additional displays that you want to use.
- 5 Enable the displays per the instructions in the section [“Configuring Multi-GPU Displays in the NVIDIA Control Panel”](#) on page 40.

SLI Multi-OS – GPU Assignment in System Virtualization

On systems with two supported graphics cards installed, this driver supports a system virtualization tool's ability to directly assign a GPU to a guest virtual machine (VM). This direct assignment allows the host and guest VM to each run on their own operating system and with their own GPU and driver.

► **Supported Virtualization Software:** Parallels Workstation Extreme

► **Supported Graphics Cards**

Up to two different models can be used in a system, from among the following:

- Quadro 6000
- Quadro 5000
- Quadro 4000
- Quadro 2000
- Quadro FX 5800
- Quadro FX 4800
- Quadro FX 3800

► **Video BIOS Requirement**

- The graphics card assigned to the guest VM needs video BIOS version 62.00.39.00.00 or later.

For a list of SLI Multi-OS certified workstations, virtualization software, and OS combinations, please see http://www.nvidia.com/object/sli_multi_os.html.

Mosaic Technology

NVIDIA® Mosaic enables transparent scaling of any application on up to eight displays from two Quadro Plex systems or multiple Quadro cards. Mosaic enables presentation of multiple GPUs (from Quadro Plex systems or multiple supported Quadro cards) as a single logical Quadro GPU to the operating system.

See the *NVIDIA Mosaic Technology User's Guide* for additional information.

APPENDIX B MULTI-GPU SYSTEMS

This appendix discusses multi-GPU display configuration in a non-SLI (or SLI Multi-view) configuration. It contains the following sections:

- ▶ “Configuring Multi-GPU Displays in the NVIDIA Control Panel” on page 40
- ▶ “Understanding Multi-GPU Displays in the Windows Display Properties Settings Page” on page 43

Configuring Multi-GPU Displays in the NVIDIA Control Panel

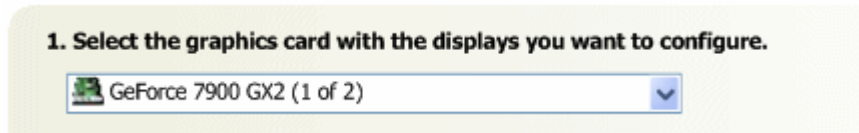
Multi-GPU systems are typically systems with more than one graphics card installed, but they can also include systems with one or more NVIDIA Quadro NVS 400 cards, or one or more NVIDIA Quadro FX 4500 FX2 graphics cards.

In a multi-GPU system, you use the NVIDIA Control Panel to control the multi-display mode (single, Dualview, Clone, or Spanning) in the same manner as you would in a single-GPU system—from the **Set up Multiple Displays** page.

Windows XP

You can only configure displays from one “GPU” at a time. So the basic steps are as follows:

- 1 Select the GPU using the **Select the graphics card with the displays you want to configure** list.



- 2 Configure the displays attached to that GPU.

Table B.1 shows the options you can expect to see for *each GPU*, depending on how many displays are connected to the GPU.

Table B.1 Change Display Configuration Options

Displays Connected	nView Display Mode Options	Displays to Use
1	Single	Display A
2	Single	Display A Display B
	Multi-display modes	Display A + B Display B + A

Table B.1 Change Display Configuration Options

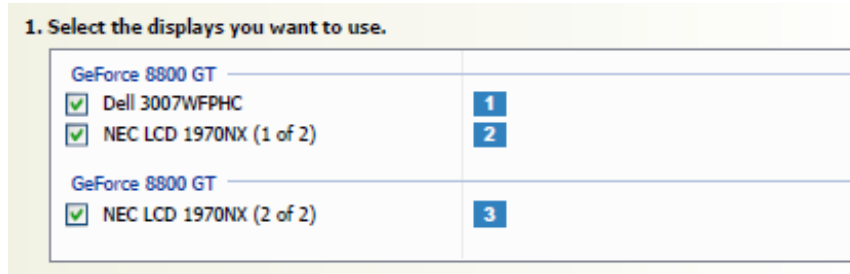
Displays Connected	nView Display Mode Options	Displays to Use
2 + TV	Single	Display A Display B Display TV
	Multi-display modes	Display A + B Display B + A Display A + TV Display TV+ A Display B + TV Display TV + B

Windows Vista/Windows 7

You can configure displays from several “GPUs” at a time.

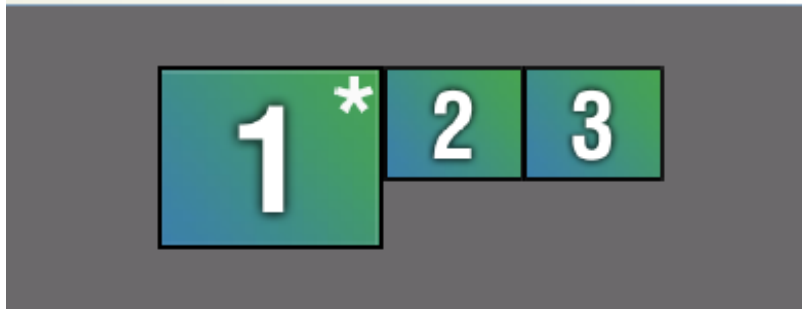
On the **Set Up Multiple Displays** page, the box under Step 1 lists all the displays that are connected to your system, and shows to which GPU they are connected.

Check or clear the check boxes to select the displays that you want to use, then click **Apply** to activate the new display configuration..



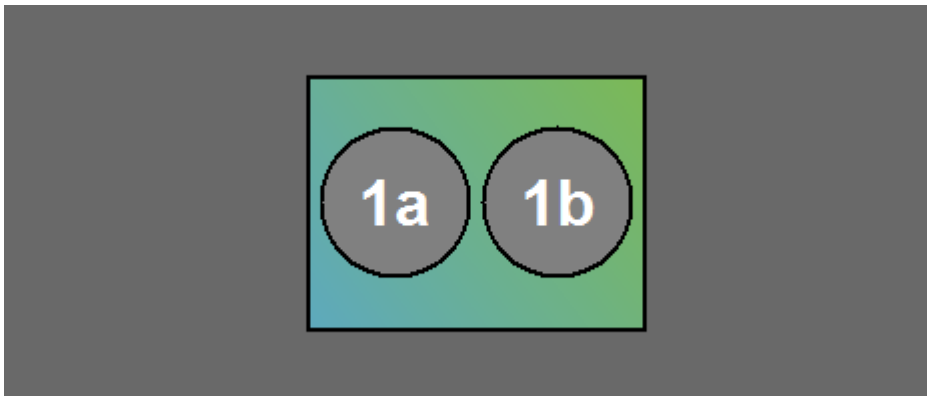
The displays will be in either extended mode or Clone mode.

Extended mode displays are identified by number in separate box icons.



- ▶ The numbering corresponds to the numbering in the Windows Display Settings page.
- ▶ The Windows primary display is indicated by the box icon with a star.
- ▶ To switch from extended mode to Clone mode,
 - a Right-click one of the display icons for the display that you want to make a clone, then click the **Clone displays** option from the pop-up menu.
Select the option that specifies the display that you want to be the primary clone display.
 - b Click **Apply**.

Cloned displays are identified by numbers inside the same box icon.



- ▶ To switch from Clone mode to extended mode,
 - a Right-click the display icon for the display that is physically positioned on the right side, then click **Extend desktop on this display** from the popup menu.
Right-clicking the box area between the circles has the same effect as clicking the left circle.
 - b Click **Apply**.

Understanding Multi-GPU Displays in the Windows Display Properties Settings Page

The following explanation describes the monitor icons for multiple displays in the Windows Display Properties Settings page.

- ▶ Overview of Dualview Monitors in a Multiple-GPU System
- ▶ Monitor Order: Windows Vista Versus Windows XP
- ▶ Monitor Icons: Windows Vista/7 Versus Windows XP
- ▶ Monitor Icons: nView Clone and Spanning Mode
- ▶ Determining GPU Order

Overview of Dualview Monitors in a Multiple-GPU System

In Dualview mode, the displays are recognized by the operating system and you can configure each display independently. You can also attach or remove Dualview displays using the Display Properties Settings page.

Figure B.1 illustrates the Display Properties Settings page for a system with four displays connected in a Dualview configuration under Windows Vista.

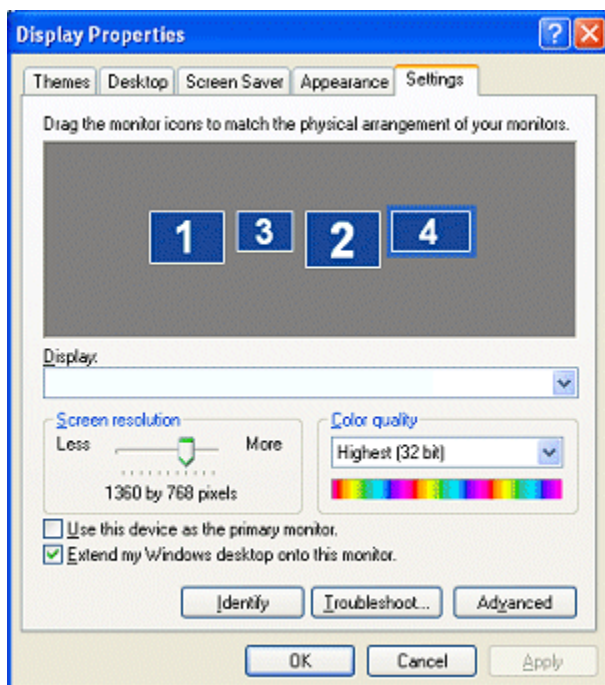


Figure B.1 Dualview Mode with Four Displays Attached

The monitor ordering is controlled by a combination of the driver and the Windows method of enumerating PCI devices. Because a number of factors are involved in the enumeration of the displays, it can be difficult to predict which display icon in the Windows Display Properties page corresponds to which display connector on the graphic cards.

To accurately determine which icon represents which display,

- 1 If the display in question is already attached, skip this step. Otherwise, attach the display by right-clicking the icon and clicking **Attached**, then click **Apply**.
- 2 Right click the icon again and click **Identify**.

The icon number appears on the display.

Monitor Order: Windows Vista Versus Windows XP

This section describes how monitors are ordered when all the displays in a multi-GPU system are connected.

Monitor Ordering Under Windows XP

Windows XP enumerates one display from the GPU and then considers the display from the next GPU. After it enumerates the display from the last GPU, the operating system goes back to the first GPU to enumerate the secondary display, and so on.

Monitor Ordering Under Windows Vista and Windows 7

Windows Vista enumerates all display outputs from a GPU before considering the next GPU.

Monitor Order Example

Table B.2 gives an example of four monitors connected to two GPUs, and shows the *general* pattern the operating system uses to enumerate the monitors under Windows Vista and Windows XP:

Table B.2 Windows Monitor Numbering Example-Four Connected Displays

Connector Position	Monitor Number Under Windows Vista/ Windows 7	Monitor Number Under Windows XP
GPU0—Output 1	1	1
GPU0—Output 2	2	3
GPU1—Output 1	3	2
GPU1—Output 2	4	4

Monitor Icons: Windows Vista/7 Versus Windows XP

This section describes how monitors are ordered when not all the displays in a multi-GPU system are connected or enabled under Dualview.

Monitor Icons Under Windows XP

- ▶ Each GPU is represented by a monitor icon, regardless of whether a monitor is connected to it.
- ▶ If a secondary display on a GPU is connected but not enabled under Dualview, there is a monitor icon for that display but it is grayed out.
- ▶ If a secondary display on a GPU is not connected, there is no monitor icon for that display.

Monitor Icons Under Windows Vista/Windows 7

- ▶ The Display Properties page shows all the monitors that can be supported by the graphics cards in the system, even if they are not physically connected.
- ▶ If a display is not connected, or connected but not enabled under Dualview, the corresponding monitor icon is grayed out.

Monitor Order Example

Table B.3 shows the *general* monitor numbering under Windows Vista and Windows XP when only some of the displays are connected. Monitor numbers are always sequential, even when displays are not connected.

Table B.3 Windows Monitor Numbering Example-Six Potential Displays

Connector Position	Connection Status	Monitor Number Under Windows Vista/Windows 7	Monitor Number Under Windows XP
GPU0—Output 1	Connected	1	1
GPU0—Output 2	Connected	2	4
GPU1—Output 1		3 (grayed)	2 (represents GPU1)
GPU1—Output 2		4 (grayed)	
GPU2—Output 1	Connected (not enabled)	5 (grayed)	3 (grayed)
GPU2—Output 2		6 (grayed)	

Monitor Icons: nView Clone and Spanning Mode

Only outputs from the same GPU can be grouped together in nView Span mode or nView clone mode.

When you enable **nView Clone mode**, Windows recognizes only the nView primary display as connected, and the display corresponding to the nView secondary clone mode display is shown to be *not attached* in the Display Properties Settings page.

When you enable **nView Horizontal or Vertical Spanning mode**, Windows recognizes only the nView primary display as connected, and considers it to have a resolution equal to the combined resolutions of both displays. The display corresponding to the nView secondary spanning mode display is shown to be *not attached* in the Display Properties Settings page.

Figure B.2 illustrates the Display Properties Settings page for a system with four displays where displays 1 and 3 are in a Clone mode configuration and displays 4 and 2 are in a Spanning mode configuration.

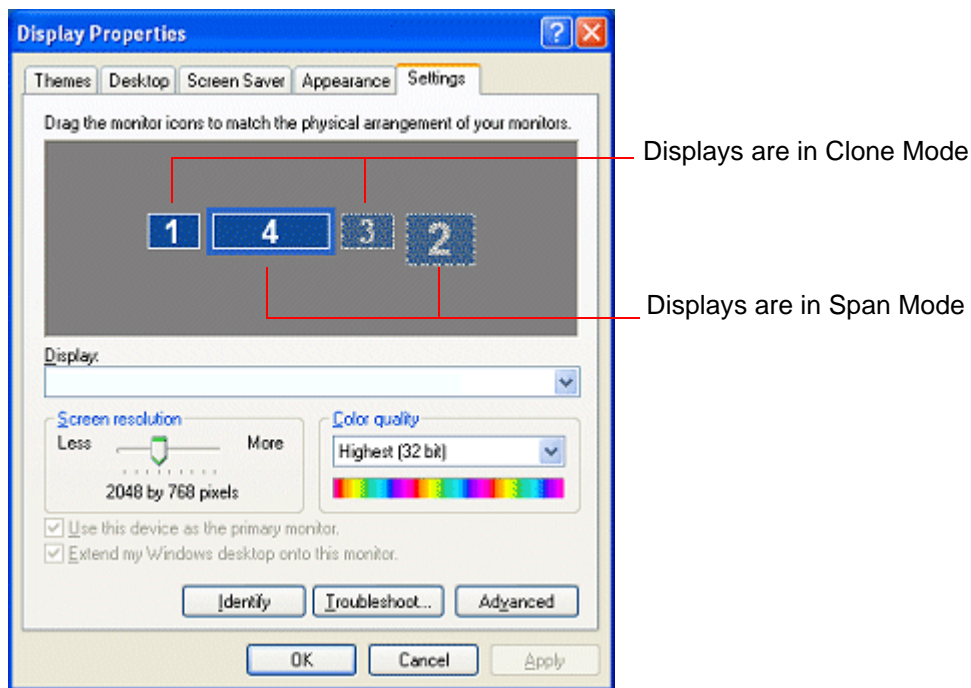


Figure B.2 nView Clone Mode and Spanning Mode

Determining GPU Order

The following are guidelines to help determine the order in which GPUs are considered when the operating system enumerates displays.

Default GPU Order

Table B.4 shows which GPU is designated as GPU0 for the purpose of monitor ordering in a multiple-GPU system.

Table B.4 Windows Monitor Numbering Example-Default Boot Priority

Configuration	Which GPU is considered first
AGP + PCI	GPU on the AGP bus (by default)
PCI-E + PCI	GPU on the PCI-E bus (by default)
NVIDIA Quadro NVS 400 (or other multi-GPU graphics cards)	GPU driving the monitor connector closest to the card edge connector.
NVIDIA Quadro NVS 440	GPU driving the monitor connector farthest way from the card edge connector.

Monitor Order After Changing the GPU Boot Priority in the BIOS

By default, in a multi-graphics card system the AGP or PCI-E bus has boot priority in the system BIOS, meaning that GPU0 resides on the AGP or PCI-E graphics card and displays are enumerated beginning with that GPU.

If you change the boot priority to the PCI bus, displays are enumerated in the same order *except that the first display is enumerated from the GPU on the PCI bus*. After that, the GPUs and displays are enumerated in the standard priority, as shown in Table B.5.

Table B.5 Windows Monitor Numbering Example-PCI Boot Priority

Connector Position	Monitor Number Under Windows Vista/ Windows 7	Monitor Number Under Windows XP
GPU0 (AGP/PCI-E)—Output 1	3	2
GPU0 (AGP/PCI-E)—Output 2	4	4
GPU1 (AGP/PCI-E) —Output 1	5	3
GPU1 (AGP-PCI-E) —Output 2	6	5
GPU2 (PCI) —Output 1	1	1
GPU2 (PCI) —Output 2	2	6

APPENDIX C PROFESSIONAL 3D STEREO

This appendix discusses professional or quad-buffered 3D stereo. It contains the following sections:

- ▶ “About Workstation 3D Stereo” on page 48
- ▶ “Using Workstation 3D Stereo” on page 50

About Workstation 3D Stereo

The NVIDIA graphics driver comes with built-in support for 3D stereoscopic viewing of OpenGL applications developed for 3D stereo. This is also referred to as “professional”, “workstation”, or “quad-buffered” stereo¹.

Basic Workstation 3D Stereo Requirements

To use workstation stereo, you need the following:

- ▶ OpenGL application that is developed for stereo
 - The application must be designed to render different content to the left and right eye.
- ▶ NVIDIA Quadro graphics card, except NVIDIA Quadro NVS cards
- ▶ Proper driver configuration through the NVIDIA Control Panel

1. This is not to be confused with the NVIDIA consumer 3D stereo driver that lets you view 3D applications in stereo even if they are not developed for stereo.

Using 3D Stereo under Different System Configurations

Supported Stereo Configurations Under Windows XP

The NVIDIA drivers support both full-screen and windowed stereo under Windows XP. [Table C.1](#) details which stereo modes are supported under which GPU/display configurations.

Table C.1 Workstation Stereo Configurations: Windows XP

System Configuration	Active Stereo Display Modes	Passive Stereo Display Modes
Single GPU - Single display	Supported	Supported
Single GPU - Multiple displays See Using Workstation 3D Stereo with Multiple Displays for more information.	Supported	Supported (including CloneMode)
Multi-system - Multiple displays Requires a G-Sync or G-Sync II card with all displays frame synchronized.	Supported	Supported (including CloneMode)
Multi-GPU Mode	The driver does not use the second GPU and automatically switches to single-GPU mode.	The driver does not use the second GPU and automatically switches to single-GPU mode.
SLI Mode	The driver does not use the second GPU and automatically switches to single-GPU mode.	The driver does not use the second GPU and automatically switches to single-GPU mode.
SLI Mosaic	Supported	Via NVAPI

Supported Stereo Configurations Under Windows Vista/Windows 7

The NVIDIA drivers support both full-screen and windowed stereo under Windows Vista or Windows 7. [Table C.2](#) details which stereo modes are supported under which GPU/display configurations.

Table C.2 Workstation Stereo Configurations: Windows Vista/Windows 7

System Configuration	Active Stereo Display Modes	Passive Stereo Display Modes
Single GPU - Single display	Supported	Supported
Single GPU - Multiple displays	<i>Not supported</i>	Supported (including CloneMode)
Multi-system - Multiple displays	<i>Not supported</i>	<i>Not supported</i>
Multi-GPU Mode	<i>Not supported</i>	Supported (including CloneMode)
SLI mode	<i>Not supported</i>	<i>Not supported</i>

Using Workstation 3D Stereo

Basic 3D Stereo Setup

- 1 Set up the 3D stereo viewing hardware according to the instructions that came with your hardware.
- 2 Start the system, then right-click the desktop and click **NVIDIA Control Panel** to open the panel.
- 3 From the *Select a Task* pane, click **Manage 3D Settings**, then click the **Global Settings** tab.
- 4 Under the *Settings: Feature* column, click **Stereo - Enable**, then click the corresponding *Setting* list arrow and select **On**.
- 5 Click **Apply**.
- 6 From the *Select a task* pane, under **Stereoscopic 3D**, select **Set up stereoscopic 3D** to open the associated page.
- 7 Make sure the *Enable stereoscopic 3D* check box is cleared, then click **Apply**.

Selecting the Stereo Display Mode

Typically, the driver detects the type of stereo hardware that is installed and automatically selects the appropriate display mode. If you cannot view 3D stereo with your application after these steps, then manually select the display mode as follows:

- 1 Re-open the *Global Settings* tab in the NVIDIA Control Panel Manage 3D Settings page
- 2 Under the *Settings: Feature* column, click **Stereo - Display mode**, then click the corresponding *Setting* list arrow and select the stereo display mode that is appropriate for your stereo viewing hardware.
 - See Table C.3, “List of Supported Stereo Display Modes” on page 51 for a description of the available modes.
 - If you want to use passive stereo using nView Clone mode, be sure to set up Clone mode using the *Set Up Display Configuration* page.
- 3 Click **Apply**.

Table C.3 List of Supported Stereo Display Modes

Option	Description	Hardware Examples
On-board DIN connector	Time sequential, page-flip stereo, with stereo shutter glasses connected directly to a 3-pin DIN VESA connector.	
On-board DIN connector (with NVIDIA IR Emitter)	Time sequential, page-flip stereo, with NVIDIA IR emitter connected to the 3-pin DIN VESA connector via dongle.	NVIDIA GeForce 3D Vision
Generic active stereo	Any time sequential, page-flip stereo	Displays which accept time-sequential stereo signals
Generic active stereo (with NVIDIA IR Emitter)	Any time sequential, page-flip stereo using the NVIDIA IR emitter	NVIDIA GeForce 3D Vision
Shutter Glasses (DDC stereo)	Time sequential, page-flip stereo. Typically implemented using shutter glasses connected to a dongle on the VGA output, but accommodates other hardware that uses page-flipped images. Not supported on GeForce 8 series and later GPUs (including NVIDIA Quadro FX 4600 and NVIDIA Quadro FX 5600)	IO Display Eyewear DTI LCD Display Icuiti LCD Eyewear

Table C.3 List of Supported Stereo Display Modes (continued)

Option	Description	Hardware Examples
nView Clone Mode	Uses projectors from two displays in nView Clone mode -left image on one display, right image on the other. Passive polarized filters (glasses) isolate the left and right images to the corresponding eyes of the viewer.	Dep3D System
nView Clone Mode (with NVIDIA IR Emitter using external stereo signal)	Clone mode passive to active stereo conversion - the left/right images are displayed through separate monitor outputs and converted to active stereo by the display. The display feeds the stereo toggle signal into the NVIDIA IR emitter using a 3-pin DIN stereo cable.	projectiondesign F10
Vertical interlaced stereo monitor	Vertical pixel columns alternate between left and right images. A beam splitter directs the left and right images to the corresponding eyes of the viewer.	SeeReal Technologies
Color interleaved display	Custom implementation for the Sharp 3D Display, an auto-stereoscopic display that uses a parallax barrier technology to provide 3D stereo on the LCD.	Sharp3D Stereo Digital Flat Panels
Horizontal interlaced stereo display	Horizontal scan lines alternate between left and right images. Passive polarized filters (glasses) isolate the left and right images to the corresponding eyes of the viewer.	VRex, Inc.
3D DLP display	Projector or rear projection TV using Texas Instrument's Digital Light Processing (DLP) technology. Requires shutter glasses.	Samsung or Mitsubishi DLP HDTV with shutter glasses
3D DLP display (with NVIDIA IR Emitter)	Projector or rear projection TV using Texas Instrument's Digital Light Processing (DLP) technology. Requires NVIDIA GeForce 3D Vision IR emitter.	Samsung or Mitsubishi DLP HDTV with NVIDIA GeForce 3D Vision

Table C.3 List of Supported Stereo Display Modes (continued)

Option	Description	Hardware Examples
3D DLP display INV mode	Use if the "3D DLP display" option results in reversed eyes.	Samsung or Mitsubishi DLP HDTV with shutter glasses
3D DLP display INV mode (with NVIDIA IR Emitter)	Use if the "3D DLP display (with NVIDIA IR Emitter) " option results in reversed eyes.	Samsung or Mitsubishi DLP HDTV with NVIDIA GeForce 3D Vision

Using Workstation 3D Stereo with Multiple Displays

In a multi-display system, you can move the OpenGL application window to all monitors, although stereo might not be visible on all monitors.

Enabling 3D Stereo with Multiple Displays

To make sure that you successfully enable 3D stereo in a multi-display configuration and avoid losing stereo settings, NVIDIA recommends first enabling stereo in single-display mode and then closing the NVIDIA Control Panel before setting up multi-display modes.

- 1 Enable 3D stereo
 - a Open the NVIDIA Control Panel, then set single-display mode using the *Set Up Multiple Displays* page.
 - b Set stereo settings using the *Manage 3D Settings* page.
 - c Close the NVIDIA Control Panel.
- 2 Enable multiple displays

Using either the Windows Display Properties page or by re-opening the NVIDIA Control panel->*Set up Multiple Displays* page, set the desired multi-display mode.
- 3 Set up other NVIDIA Control Panel->Workstation settings as needed, such as frame locking.

3D Stereo Under nView Modes

Under nView multi-display modes, both displays must be set to the same resolution and refresh rate. If the refresh rates are different, the 3D stereo will be displayed on the display with the highest refresh rate.

3D Stereo Under Dualview Modes

Under Dualview mode, all displays must be set to the same refresh rate for 3D stereo to be displayed on all the Dualview displays. If the refresh rates are different, 3D stereo will be displayed on the display with the highest refresh rate.

APPENDIX D NVIDIA APPLICATION CONFIGURATION ENGINE

This appendix discusses the NVIDIA application configuration engine (ACE) for professional workstation applications. It contains the following sections:

- ▶ “Introduction” on page 56
- ▶ “Using ACE with Supported Applications” on page 56
- ▶ “Using Applications that are not Supported by ACE” on page 58
- ▶ “Adding to the List of ACE-detectable Applications” on page 61
- ▶ “Frequently Asked Questions” on page 62

Introduction

Background

Workstation application profiles are a group of software settings used by the NVIDIA graphics driver to provide optimum performance when using a selected application. If there is an available profile for an application, it should be used in order to ensure correct application behavior and optimal performance.

About NVIDIA ACE

With the NVIDIA application configuration engine (ACE), the graphics driver can now detect supported workstation applications and apply the appropriate profile settings automatically—you no longer need to manually select the profile from the NVIDIA Control Panel. If you run more than one application at a time, ACE makes sure that the driver applies the appropriate profile settings to each application.

Using ACE with Supported Applications

When you run an application that is supported by ACE, you do not need to do anything special. The driver will detect the application and apply the appropriate profile settings automatically.

How to Determine ACE Support

To determine whether your application is supported by ACE:

- 1 Open the NVIDIA Control Panel.
- 2 From the *Select a Task* pane, under 3D Settings, click **Manage 3D Settings**, then click the *Program Settings* tab.

The *Select a program to customize* list box contains a list of the ACE-detectable applications.

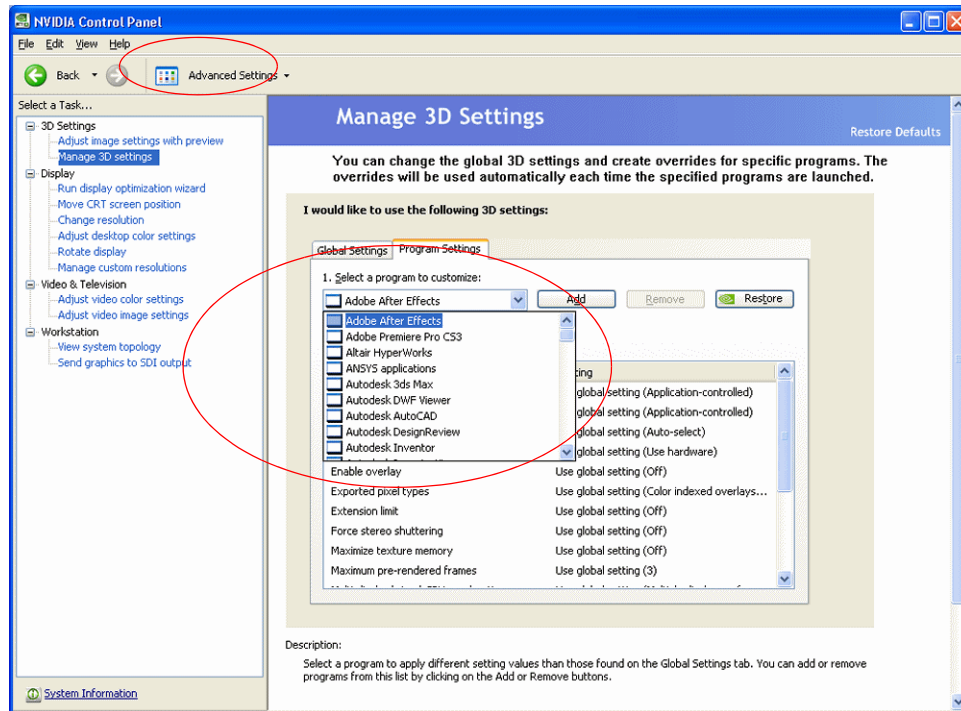


Figure D.1 Manage 3D Settings Page-ACE-detectable applications

Modifying Settings for ACE-detectable Applications

You can modify the settings as follows:

- 1 Select the application from the *Select a program to customize* box.
The settings for the application are listed in the *Specify the settings for this program* box.
- 2 Click the setting you want to change and then select the new setting from the drop-down list.
- 3 Click **Apply** when you are finished making your changes.

Using Applications that are not Supported by ACE

If your application is not detectable by ACE, then you should configure an application profile and make sure it is set before running the application.

Setting Up an Application Profile Using Global Presets

- 1 From the Manage 3D Settings page, click the **Global Settings** tab.
- 2 Click the *Global Presets* list arrow.

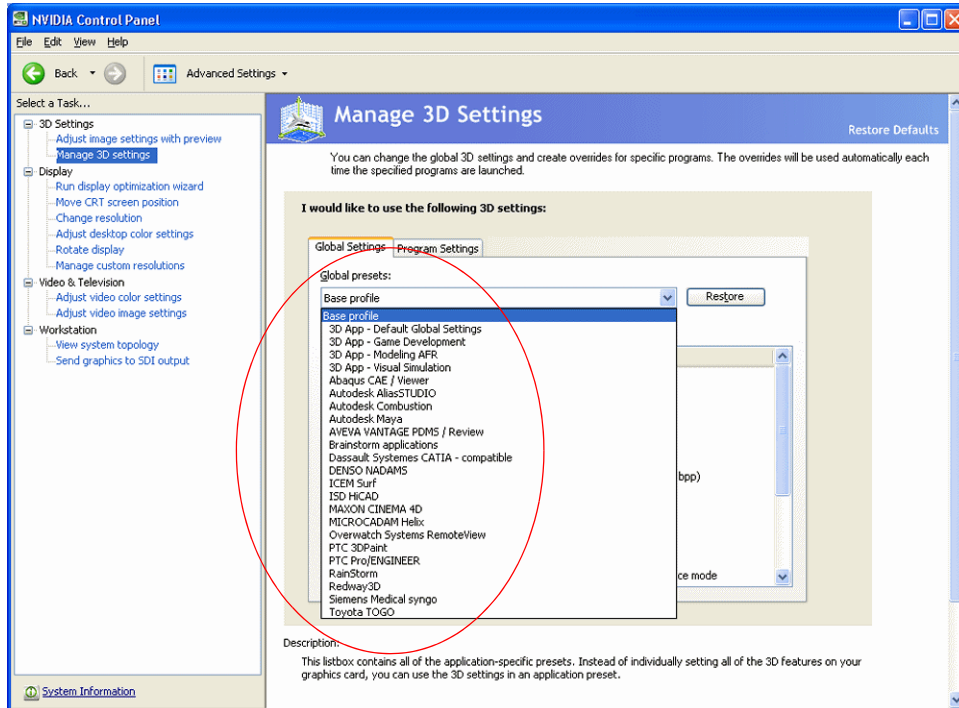


Figure D.2 Manage 3D Settings Page-Applications with Global Profiles, Windows XP

- 3 Select one of the global presets:

- *Under Windows Vista/Windows 7*

Select a **Base profile** or one of the generic **3D App** profiles, or create a new profile (see “Adding to the List of ACE-detectable Applications” on page 61).

- *Under Windows XP*

Under Windows XP, the driver includes preset profiles for a number of applications that are not ACE-detectable.

Select the application name from the drop-down list.

If your application is not listed, then select **Base profile** or one of the generic **3D App** profiles, or create a new profile (see [“Adding to the List of ACE-detectable Applications”](#) on page 61).

- 4 In the *Settings* box, you can modify the profile by clicking the setting you want to change and then selecting the new setting from the drop-down list.
- 5 Click **Apply** when you are finished making your changes.

If you run a different application that is not ACE-detectable and do not want to use these settings, then repeat these steps for the new application.

Be aware that these settings may affect any ACE profile settings that specify “Use global setting”.

About the Global Presets

Global profiles, or presets, are a set of 3D settings that the driver applies to any workstation application. While a specific profile contains settings that work best with a particular application, the settings are applied to any workstation application you run, as long as there are no ACE-detected program settings to override them.

The following are descriptions of the available global presets:

► **Base profile**

This preset lets you configure all the settings, and provides the most flexibility. Other presets allow you to configure only a limited selection of settings.

► **3D App - Default Global Settings**

This preset uses SLI single-GPU rendering mode, and is also useful when you need to use non-SLI configurations.

► **3D App - Game Development**

This preset is useful for game development when using an NVIDIA Quadro card. This eliminates the need for game developers to switch to a GeForce graphics card as the settings cause the Quadro card to run like a GeForce card.

► **3D App - Modeling AFR**

This preset is useful for modeling applications, and uses SLI AFR mode.

► **3D App - Visual Simulation**

This preset is useful for visual simulation applications, and uses SLI SFR mode.

- ▶ **Application-specific presets (for Windows XP):** [Table D.1](#) is an example of non ACE-detectable applications for which there are preset global profiles. Consult the NVIDIA Control Panel for the latest list of applications.

Table D.1 Application-specific Global Presets (Not supported by ACE)

Application
Abaqus CAE / Viewer
Autodesk AliasSTUDIO
Autodesk Combustion
Autodesk Maya
AVEVA VANTAGE PDMS / Review
Brainstorm applications
DENSO NADAMS
ICEM Surf
ISD HiCAD
MAXON CINEMA 4D
MICROCADAM Helix
Overwatch Systems RemoteView
PTC 3DPaint
PTC Pro/ENGINEER
RainStorm
Siemens Medical syngo
Toyota TOGO

Adding to the List of ACE-detectable Applications

If your application is not listed in any of the profile lists in the Global Settings or Program Settings tab, then you can create a profile for that application as follows:

Note: If your application is listed in the Global Settings tab (Windows XP only), then *do not create a new profile*. Set the global preset for that application instead.

- 1 From the Manage 3D Settings page, click the **Program Settings** tab.
- 2 Click **Add**.
- 3 In the Open dialog box, navigate to the location of your application executable, then click the executable file name and click **Open**.
- 4 The file name appears in the *Select a program to customize* list box.
- 5 In the *Specify the settings for this program* box, configure any settings by clicking the setting you want to change and then selecting the new setting from the drop-down list.
- 6 Click **Apply** when you are finished making your changes.

The new profile will be applied automatically whenever the application is run, just like one of the default ACE profiles.

If your application was running while you created the new profile, you must restart the application in order for the settings to be applied.

Frequently Asked Questions

- ▶ *What happens when I run more than one ACE-detectable application at the same time?*

The driver detects each application and applies the appropriate profile to each one automatically.

- ▶ *What happens when I run an ACE-detectable application and a non-ACE-detectable application at the same time?*

The driver applies the global preset to the non-ACE-detected application, and applies the appropriate profile to the ACE-detected application. Note that any settings in the ACE profile that specify “Use global setting” will be controlled by the global preset.

- ▶ *Can I create my own application profile?*

Only one profile can be created for a specific executable, so if your application is ACE-detectable, do not create another profile for that application.

If your application is not ACE-detectable, and there is no global preset for it, then you can create a new profile as described in [“Adding to the List of ACE-detectable Applications”](#) on page 61.

- ▶ *Can I create a new global profile for a specific application?*

For applications that are not detected by ACE, you can select an existing global preset and customize it, but you will not be able to save it under a custom name.

- ▶ *Which global preset should I use?*

Unless you know that a specific global preset is appropriate for your application (see [“About the Global Presets”](#) on page 59), it is best to use the **Base profile**.

Notice

ALL NVIDIA DESIGN SPECIFICATIONS, REFERENCE BOARDS, FILES, DRAWINGS, DIAGNOSTICS, LISTS, AND OTHER DOCUMENTS (TOGETHER AND SEPARATELY, "MATERIALS") ARE BEING PROVIDED "AS IS." NVIDIA MAKES NO WARRANTIES, EXPRESSED, IMPLIED, STATUTORY, OR OTHERWISE WITH RESPECT TO THE MATERIALS, AND EXPRESSLY DISCLAIMS ALL IMPLIED WARRANTIES OF NONINFRINGEMENT, MERCHANTABILITY, AND FITNESS FOR A PARTICULAR PURPOSE.

Information furnished is believed to be accurate and reliable. However, NVIDIA Corporation assumes no responsibility for the consequences of use of such information or for any infringement of patents or other rights of third parties that may result from its use. No license is granted by implication of otherwise under any patent rights of NVIDIA Corporation. Specifications mentioned in this publication are subject to change without notice. This publication supersedes and replaces all other information previously supplied. NVIDIA Corporation products are not authorized as critical components in life support devices or systems without express written approval of NVIDIA Corporation.

HDMI

HDMI, the HDMI logo, and High-Definition Multimedia Interface are trademarks or registered trademarks of HDMI Licensing LLC.

Macrovision Compliance Statement

NVIDIA Products that are Macrovision enabled can only be sold or distributed to buyers with a valid and existing authorization from Macrovision to purchase and incorporate the device into buyer's products.

Macrovision copy protection technology is protected by U.S. patent numbers 5,583,936; 6,516,132; 6,836,549; and 7,050,698 and other intellectual property rights. The use of Macrovision's copy protection technology in the device must be authorized by Macrovision and is intended for home and other limited pay-per-view uses only, unless otherwise authorized in writing by Macrovision. Reverse engineering or disassembly is prohibited.

OpenCL

OpenCL is a trademark of Apple Inc. used under license to the Khronos Group Inc.

Trademarks

NVIDIA and the NVIDIA logo are trademarks or registered trademarks of NVIDIA Corporation in the United States and other countries. Other company and product names may be trademarks of the respective companies with which they are associated.

Copyright

© 2014 NVIDIA Corporation. All rights reserved.