

# LIVECLONE UTILITY

The *LiveClone* utility is designed to clone the content of one display to another display in a system with AMD FirePro workstation graphics. If the original display and clone display run at different resolutions, the image is filtered and scaled without distortions. LiveClone supports Windows XP, Vista or Windows 7.

## Combining LiveClone with AMD Eyefinity technology

Using Eyefinity groups, several displays may be cloned to a single monitor or vice versa. The image to the right shows two portrait monitors combined into a single virtual display. LiveClone clones these two displays to a third, landscape monitor with a much lower resolution, using a single AMD FirePro V5900 graphics card.



Naturally, the cloned display may also be a projector, presenting the operators desktop to a wider audience.

## Features

### Subarea cloning and panning

*LiveClone* allows to zoom into the cloned display by simply selecting a rectangle to display. Once a subarea has been selected, the clone display will scale and filter only that specific area. This feature is particularly useful if the cloned display has a much lower resolution than the source display, or if only an application's client area shall be visible to an audience.



The user may pan the subarea over the entire source screen, using the cloned display like a magnifying glass. By

repeatedly selecting subareas, it is possible to zoom in even further.

### Continuous capturing

*LiveClone* may either capture the source display continuously or just on request. This allows a presenter to arrange content on a console display and send just a snapshot of the console to a presentation screen whenever suitable.

### Simple monitor switching

Using *LiveClones* user interface, the captured screen may be changed at any time. By clicking a button, the utility switches through all displays attached to the system, no matter how many graphics cards are installed.

## Saving screenshots

The content of the cloned display may be saved to disk any time, creating snapshots for documentation purposes or collecting content for later creation of a presentation.

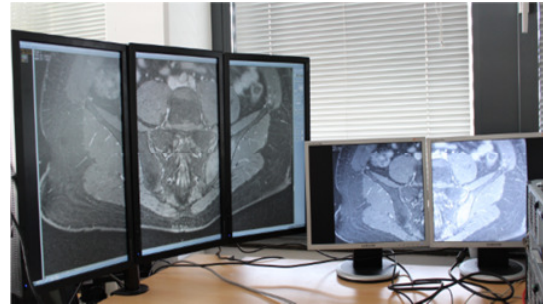
## Fullscreen or windowed mode

*LiveClone* may run either in windowed mode or fullscreen, allowing for maximum flexibility: Simply drag the *LiveClone* window to a display you want to use as a clone and press the maximise or fullscreen buttons. Switch the source screen by pressing the input screen button.



## Compatibility with Eyefinity

*LiveClone* can clone an individual display to an Eyefinity group or vice versa – or clone one group to another.



## Compatibility with 10bit or packed pixel displays

*LiveClone* is able to capture packed pixel displays or 10Bit color displays and clone their content to any attached display. However, the clone will automatically switch to 8Bit color depth.

## Cloning extended desktops

Some software packages require to see an extended desktop configuration instead of an Eyefinity group. *LiveClone* supports this requirement by the ability to capture a group of displays from an extended desktop and display them on a single clone, i.e. projector in a presentation environment.



## Persistent system configuration

*LiveClone* may save its active setup to the registry any time. Once a given setup is saved, it will be restored automatically at the next startup. By placing a shortcut to *LiveClone* into the Windows autostart folder, *LiveClone* will start automatically on future system reboots.