

# zSpace 200™ Experience:

## Installation of the zView



## Introduction

With zView, you can share the zSpace experience with others. Normally, only the person using the zSpace can see the application in stereoscopic 3D. While your zSpace system may include non-tracked eyewear for observers, the display is based on the user's head position.

With zView you can share the experience with a large audience, without additional eyewear. zView projects the user's session onto a second display, such as a projection screen or a second monitor. You can use zView to display the application in real time or record the zSpace session for later sharing.

## Overview

In this manual, you will learn how to share zSpace experience with zView. This experience has been developed and certified by the iV Lab at Dassault Systèmes. For any feedback, please contact this document's writer.

## Prerequisites

The zSpace 200 have to be installed before installing the zView.

## Experience Description

zView provides an Augmented Reality experience:

Augmented Reality View shows the application from a fixed viewpoint, without head tracking. This mode requires a camera. Everything in the camera's frame, including the user, is shown.



**Augmented Reality View**

### zView Requirements

- zSpace 100 or 200 previously installed
- zView software provided by Dassault Systemes
- A second display for the zView application window
- A webcam that supports HD resolutions (1080x720 or 1920x1080)  
We have tested zView with Logitech C920 webcam.
- A zSpace camera mount or a tripod
- 3DVia Studio Pro XHD license installed

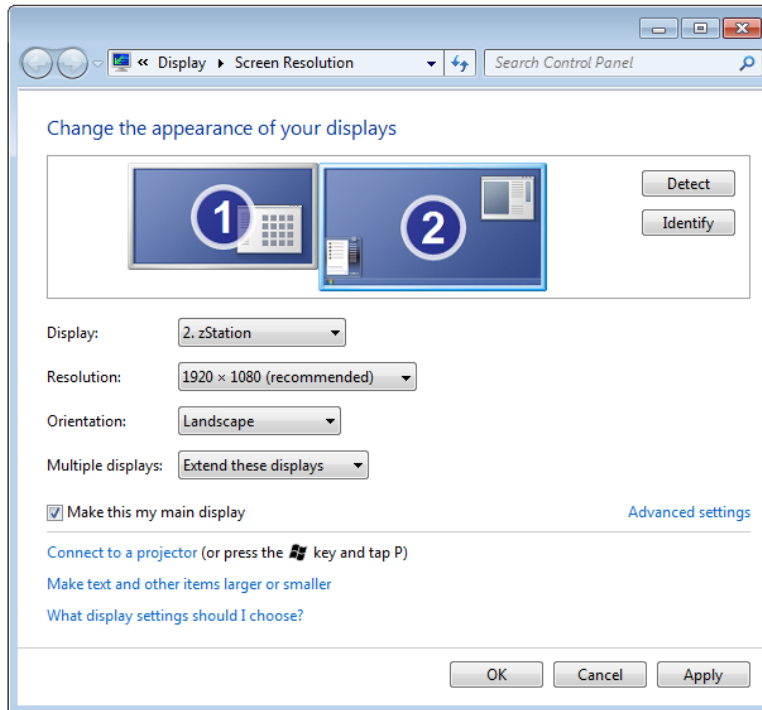
### zView Setup

#### Connecting to a Second Display

You can connect your PC to a second monitor, a projection screen, or a TV by using a DVI, HDMI, VGA, or DisplayPort connection (depending on what the second display requires).

1. In the Windows Control Panel, select **Display**.
2. Choose **Adjust Resolution**.

3. Check that the Control Panel shows the two displays in the same left-to-right order as your displays are physically placed.  
For example, in the window below, the zSpace display is to the right of the other display.
4. The zSpace display has to be the main display (as shown below). If the displays are not ordered properly, click and drag the display 1 or 2 in the control panel.
5. Select **Extend these displays**.
6. Click on **Apply**.



### Screen Resolution

For more information, visit the zSpace Support Portal (<https://support.zspace.com/>) and search for the article on Managing Multiple Displays.

### How to set up the Camera

Before you set up the camera, you need to position the camera mount/tripod (you can use the zSpace camera mount or your own tripod), connect the camera to your PC and install the Webcam software.

## Placing the Tripod

1. Attach the camera to the tripod so that the camera captures the whole zSpace screen.
2. Adjust the tripod if you want to capture both the szSpace screen and the user.

## Connecting the Webcam

1. Connect the webcam USB cable to your PC (refer to the next section for instructions on adjusting the webcam calibration).

**Note:** On many PCs, the webcam works better with a USB 2.0 port rather than a USB 3.0 port. If you need help identify your USB ports, visit the zSpace Support Portal (<https://support.zspace.com/>) and search for the article on USB 3.0 ports.

## Installing Logitech webcam software

1. Go to <http://support.logitech.fr/fr/downloads>
2. Download Logitech Webcam Software.
3. Install Logitech Webcam Software.

## How to configure the zView

1. Unzip the file *3DViewCalibrationTool\_PointAndClick.zip* provided by Dassault Systemes.
2. Watch the video *HowTo\_Click\_and\_Point\_11-2014.mp4*, to learn how to calibrate zView.
3. As shown the video, launch the batch file *run.bat* located in the directory *3DViewCalibrationTool\_PointAndClick*
4. Calibrate the zView.

## How to install 3DVia Studio Pro XHD (not nodelock license)

1. Go to [\\dson\rnd\CDROMV5\GA\derniere mise à jour\DSL.S.AIOS\1](#)
2. Execute *SetupDSLsmsi* (Application).

**Note:** If there is a message which told you that a previous license server is already installed, you have to uninstall DS Licence Server (in the control Panel) and relaunch SetupDSLsmsi.

3. To install and set up DS license server, follow the instructions given in the PDF file named *DSL.S*.
4. Send a mail with the computer Target ID.  
You will receive an email with the license keys and a *.LIC* file attached.
5. Connect to a network.
6. Open License server Administration.
7. Double click on the status.
8. Click on OK.  
The status appears in blue.
9. Click on Enroll Licenses
10. Search and Select the *.LIC* file.
11. Click on OK.
12. Restart the computer.

## How to launch the zSpace with zView

1. Log on the computer.
2. Close the VRPN server (automatically opened at the computer startup).
3. Launch the Webcam software.
4. Click on **Capture Rapide**.
5. Close the Webcam software.
6. Check if you are connected to the server:
  - a. Double click on **License Server administration**.
  - b. Double click on the icon under the status.
  - c. Click on OK  
You are connected when the icon becomes blue.
7. Close the **License server Administration**.
8. Launch zSpace with zView due to the *zSpaceComposerExperience\_3DView* application located in the directory *C:\zSpaceComposerExperience\management*.  
zSpace is launching with zView but the pen does not work.
9. To keep the zSpace active, double Click on *vrpn\_server* application located in the directory *C:\zSpaceComposerExperience\redist\InfiniteZ\bin\zSpaceVRPNServer\1.2.0.17886*

## Installation of the zView



3Dview display on the second display