

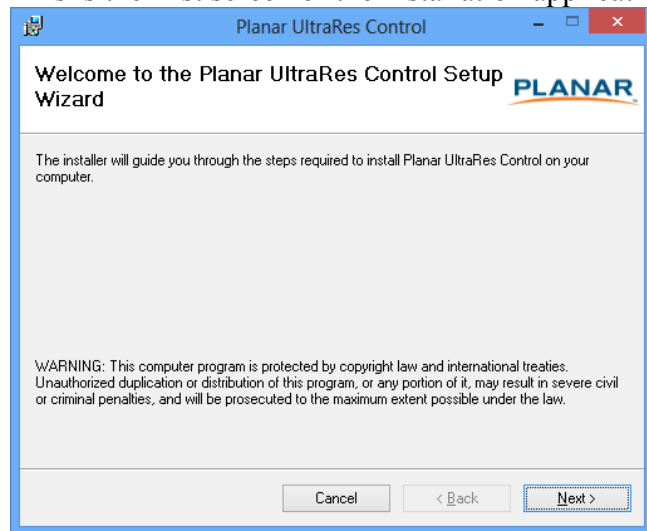
UltraRes Firmware Upgrade (Windows 7)

This document describes the steps necessary to upgrade the UltraRes UR8450 / UR9850 firmware and FPGA code using Planar UltraRes Control.

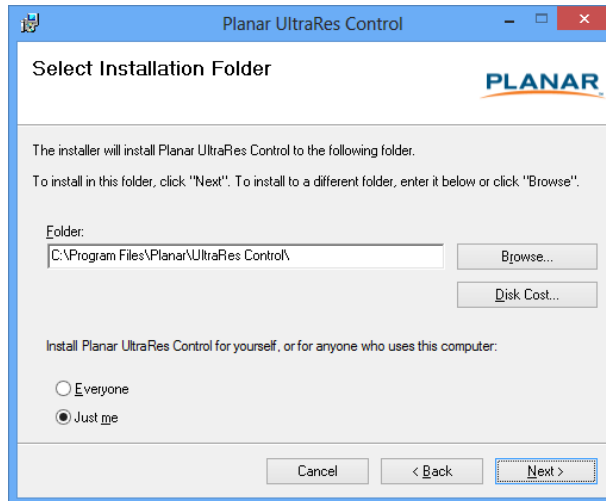
- [Installing the Planar UltraRes Control application](#)
- [Installing the UltraRes USB drivers](#)
- [Upgrading the firmware](#)

Installing the Planar UltraRes Control application

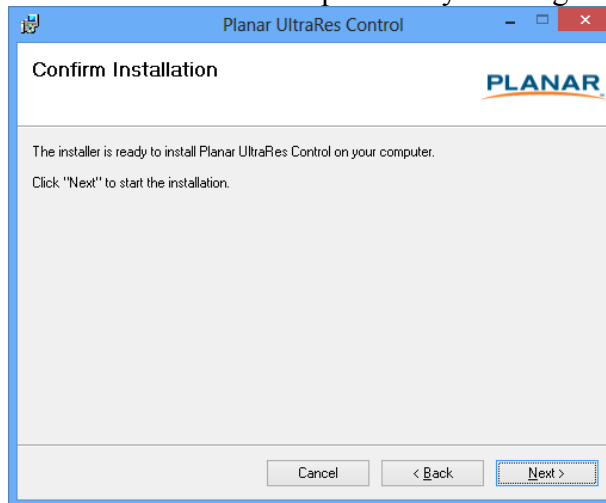
1. Obtain a copy of the UltraResControl.msi installer application.
2. Double click the application in Windows Explorer
3. Follow the instructions in the installation wizard to install the application
 - a. This is the first screen of the installation application. Click “Next”.



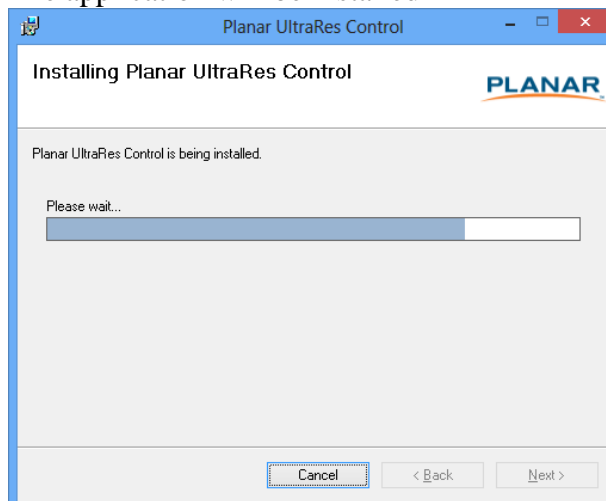
- b. Select a location to install the application. The default location is the recommended location to install the application. Click “Next”.



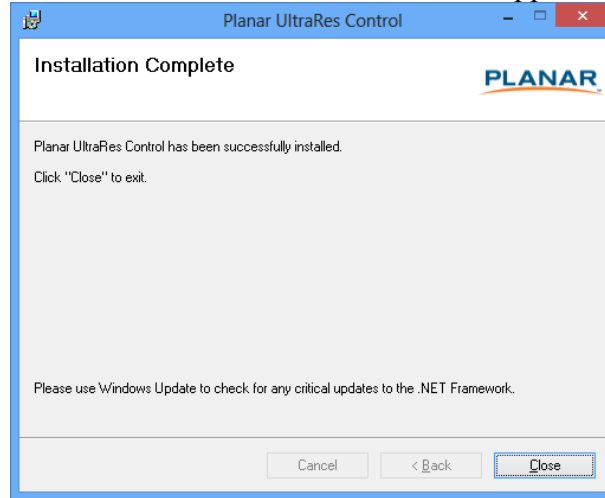
- c. Confirm the installation process by clicking “Next”.



- d. The application will be installed



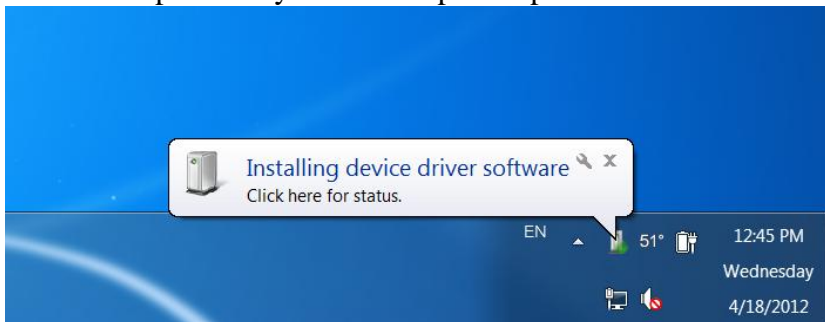
- e. When the installation is complete, the Installation Complete dialog will be shown. Click “Close” to close the installation application.



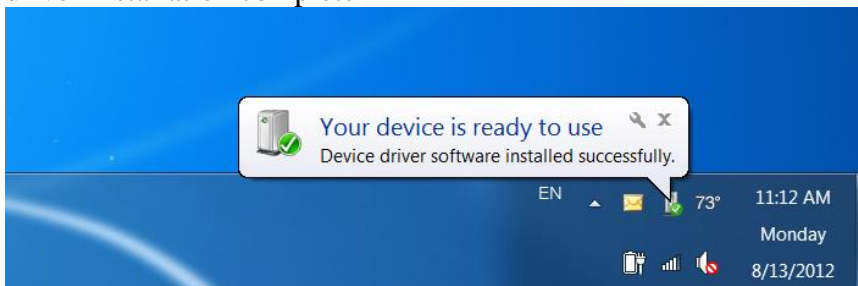
Installing the UltraRes USB drivers

Before upgrading the firmware using USB, the USB drivers must be installed. This section describes the steps necessary to install the USB drivers. You can skip this section if you have already installed the USB drivers on your computer.

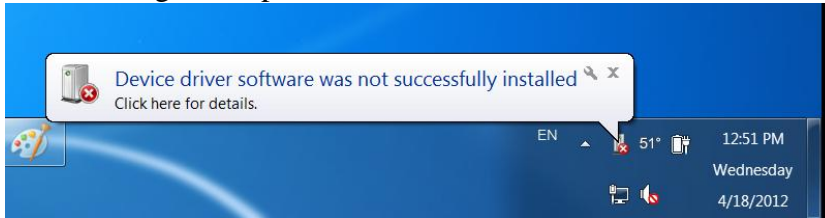
1. Plug in the USB cable to your computer and to the UltraRes panel.
2. Windows will detect the new hardware and attempt to install the drivers on its own. If you do not see the “Installing device driver software” message, then the driver installation previously failed. Skip to step 5.



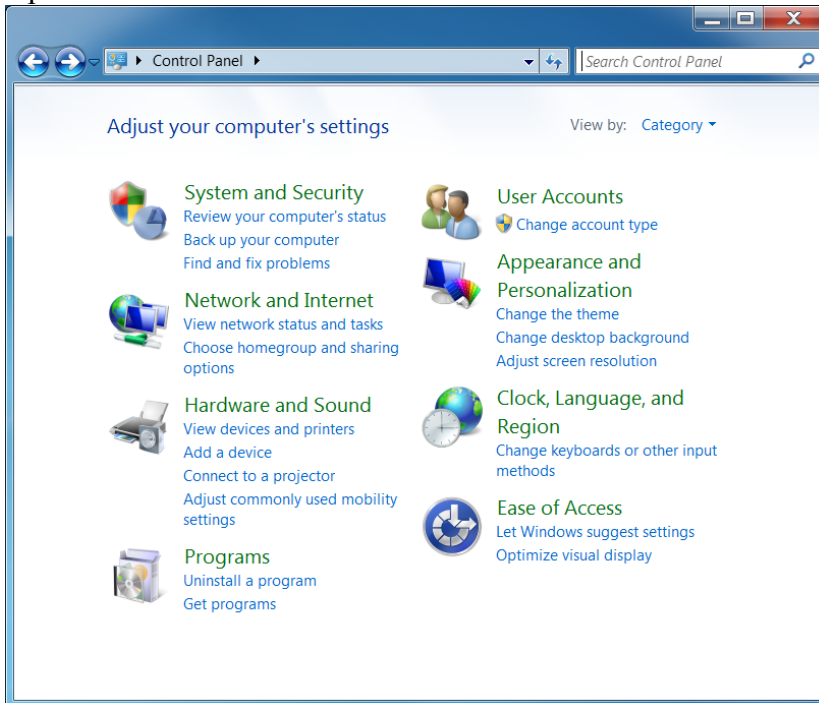
3. If driver installation succeeds, you will see a message like the one shown below. If so, driver installation complete



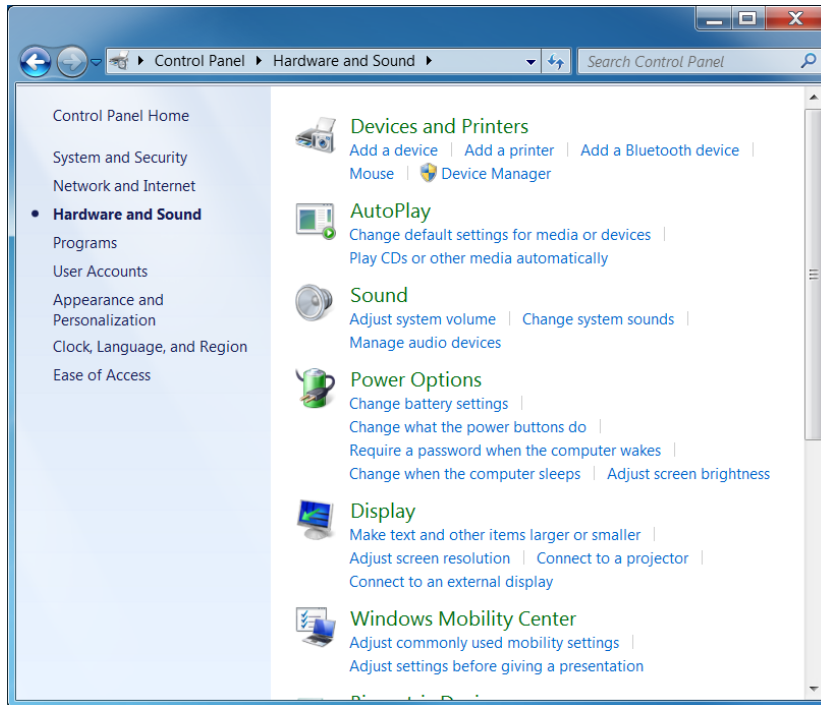
4. If Windows' attempt at installing the drivers fails, you will need to manually install the drivers using the steps below.



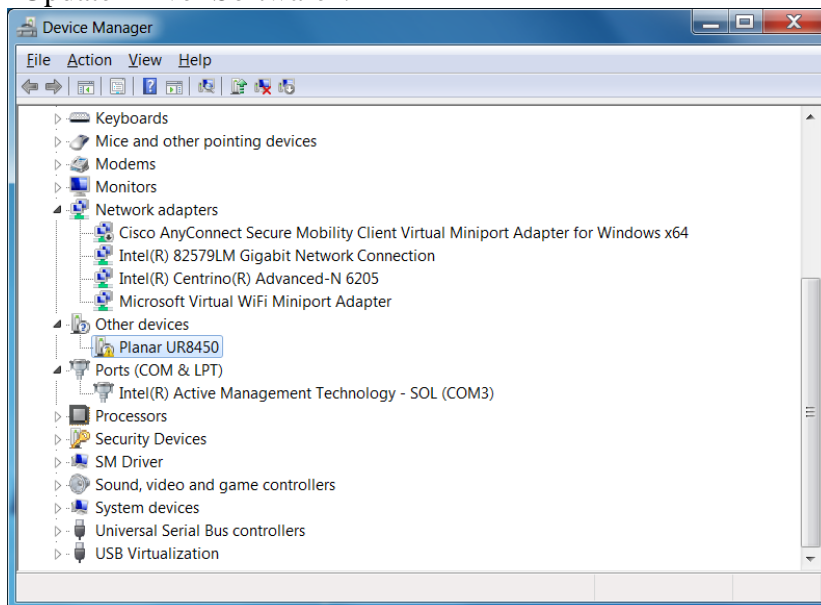
5. Open the Start menu and select "Control Panel".



6. Select Hardware and Sound. In the following menu, under Devices and Printers, select "Device Manager".

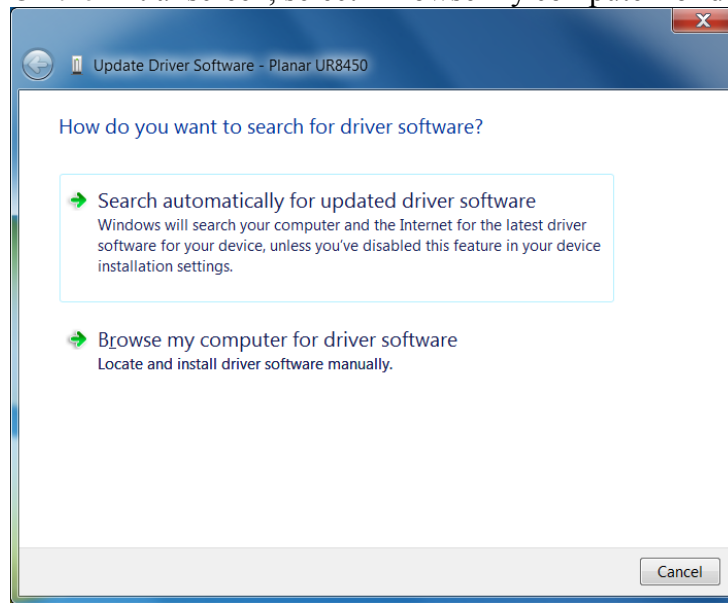


7. In the Device Manager, there will be a “Planar UltraRes” or “Planar UR8450” item in the “Other Devices” section. Right click on Planar UltraRes (or Planar UR8450) and select “Update Driver Software”.

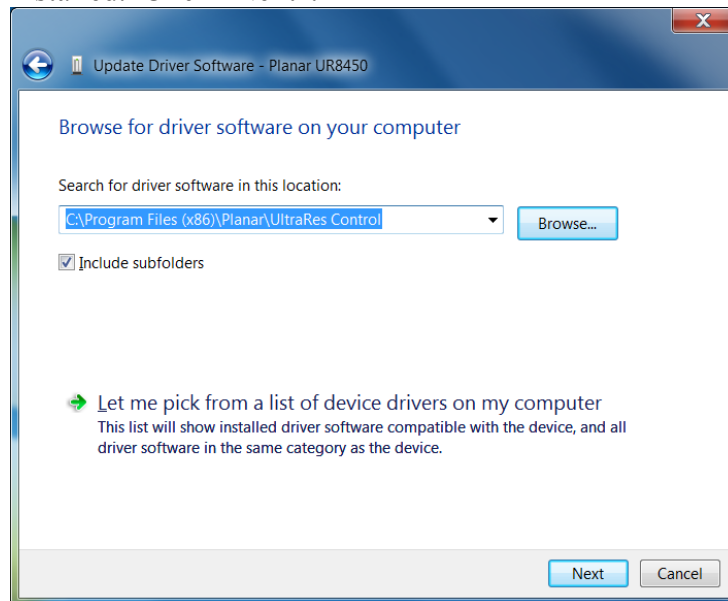


8. Follow the steps defined in the Update Driver Software wizard as follows

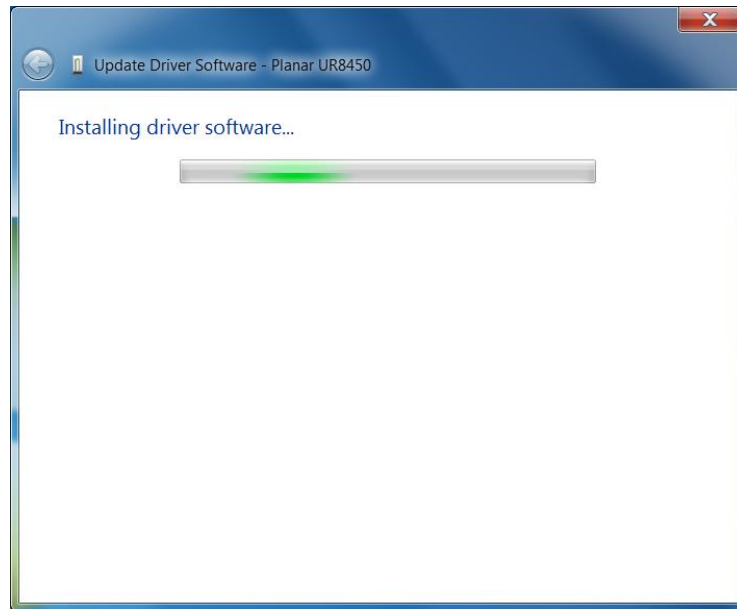
- a. On the initial screen, select “Browse my computer for driver software”.



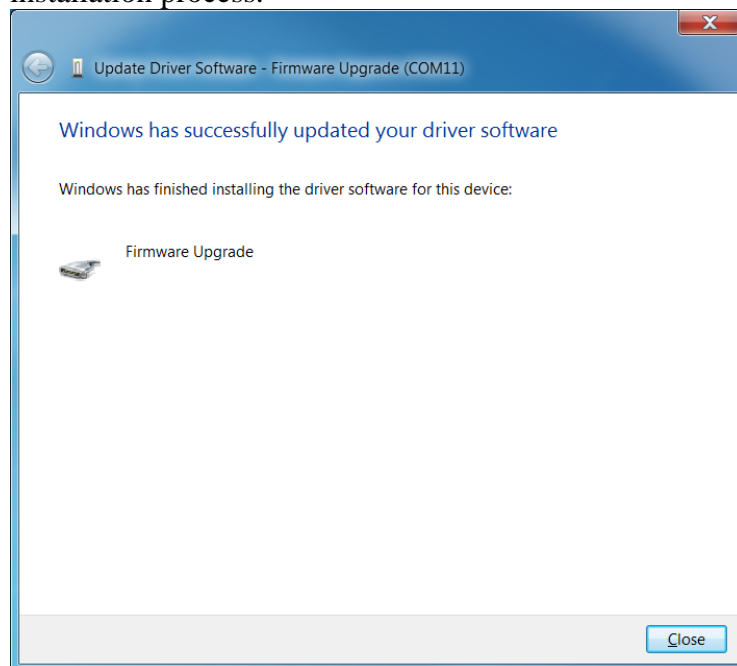
- b. Make sure the “Include subfolders” checkbox is checked. The USB drivers are installed as part of the Planar UltraRes Control installation process. Use the “Browse” button to locate the directory where Planar UltraRes Control was installed. Click “Next”.



- c. The Update Driver Software wizard will search the directory for the proper USB drivers and install them.

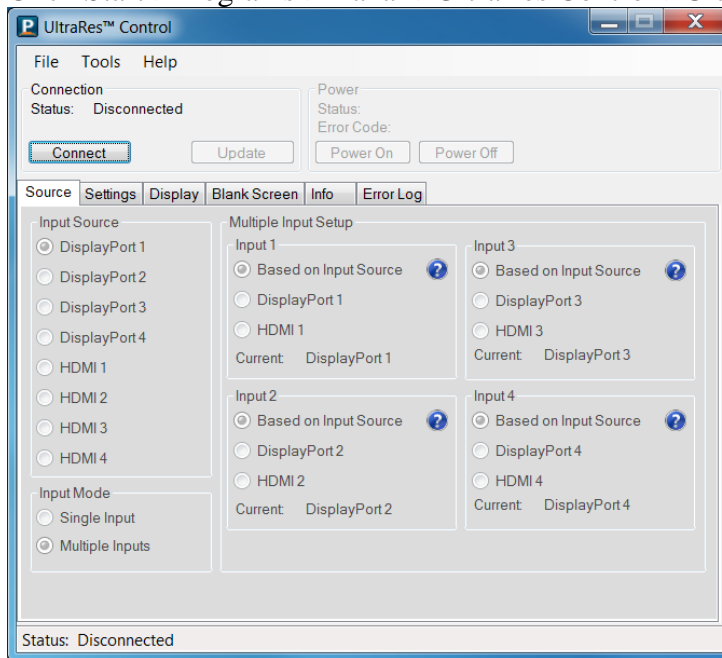


- d. When the installation completes, click "Close". This completes part 1 of the installation process.

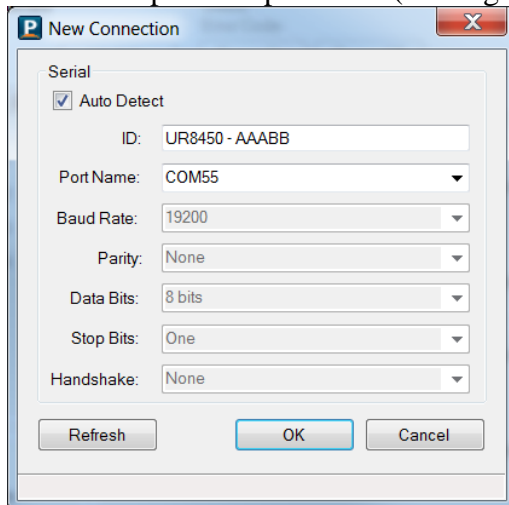


Upgrading the Firmware

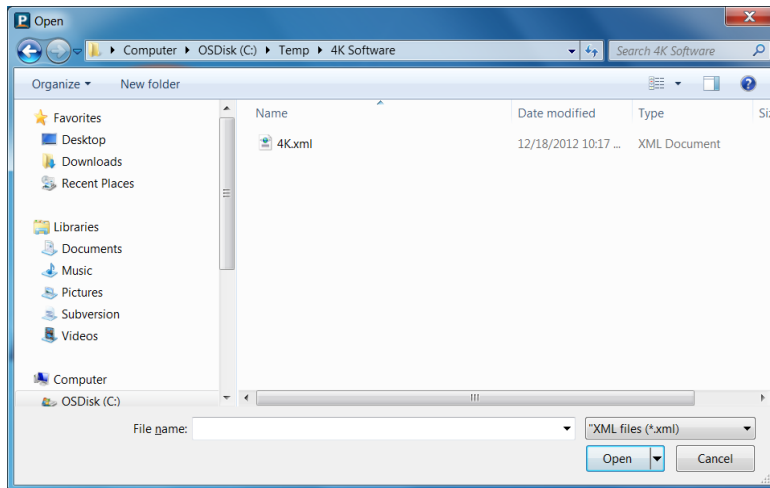
1. To start the application, use the Windows Start button to launch Planar UltraRes Control. Click Start->Programs->Planar->UltraRes Control->UltraRes Control



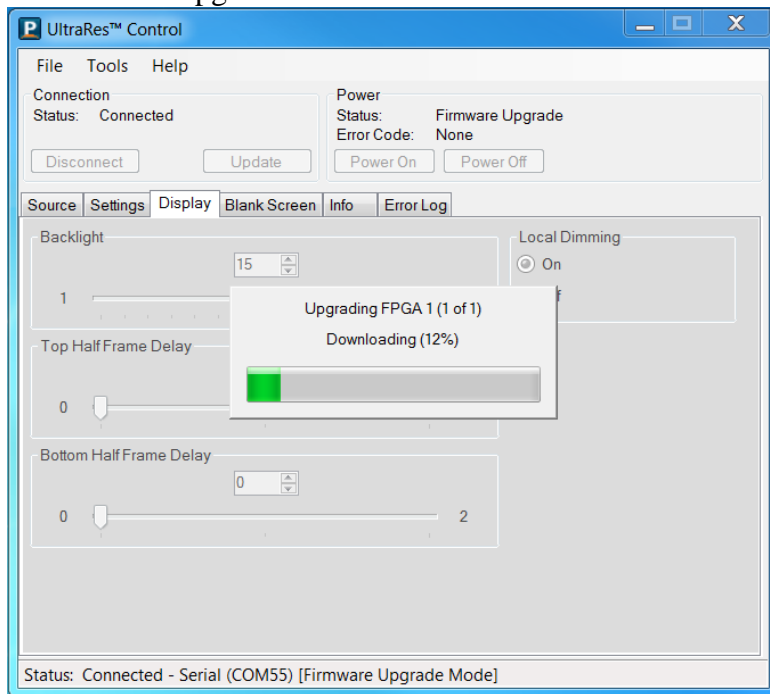
2. Connect the USB cable to the UltraRes panel and your computer.
3. Click the “Connect” button to search for the connected display. The “New Connection” dialog will be shown.
4. The “Port Name” list box will show the products that were found in the Firmware Upgrade state. If no products were found, check the cable and power connections. Select the correct port and press OK (note: generally there will be only one device found).



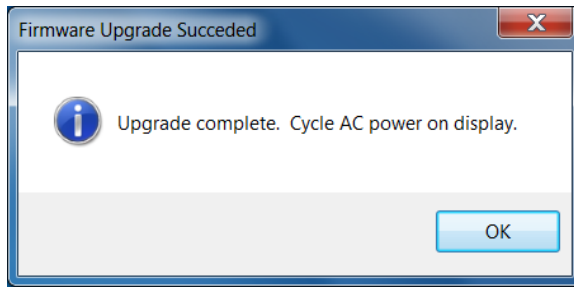
5. Select File->Upgrade Firmware. Locate the firmware file to upgrade. The firmware file is named “4K.xml”. Click “Open” to start the upgrade.



6. Planar UltraRes Control will download the firmware file to the UltraRes panel. This process takes ~40 minutes. Do NOT turn off the power or unplug the USB cable while the firmware upgrade occurs.



7. Once the firmware has been programmed, a dialog box will display “Upgrade complete. Cycle AC power on display.”



8. Firmware upgrade is now complete. Close the Planar UltraRes Control application and cycle AC power on the UltraRes panel.