

Replacing the Matrix Interface Board

These instructions explain how to remove and replace the interface board in a Matrix LCD module. In most cases, the interface board should be replaced while an LCD module is still in the Matrix wall.

Caution: This procedure should only be performed by qualified service persons and end users with experience installing LCD displays.

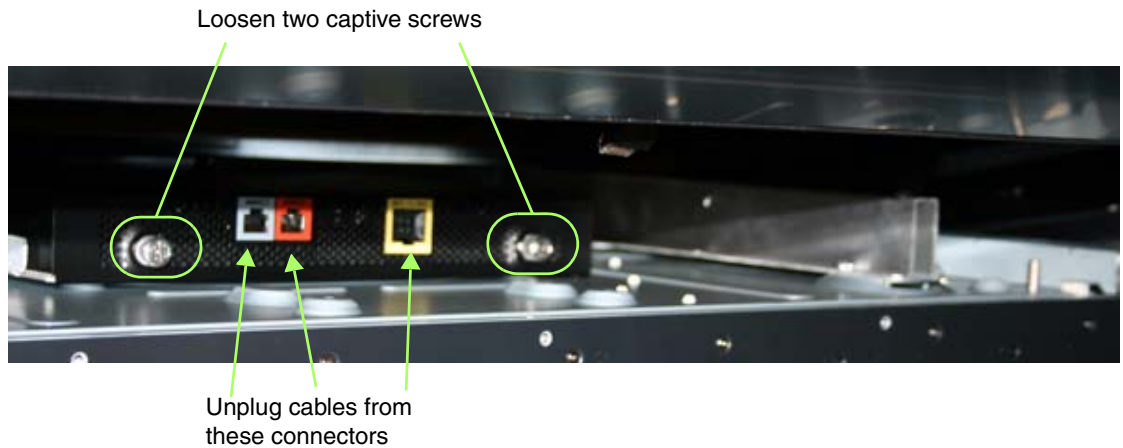
- 1 Power down the LCD on which you want to replace the interface board.
- 2 Carefully move the LCD module into the service position.

Caution: When servicing the LCD, care should be taken with surrounding LCDs, as damage can easily occur.

Move LCD up and into the service position



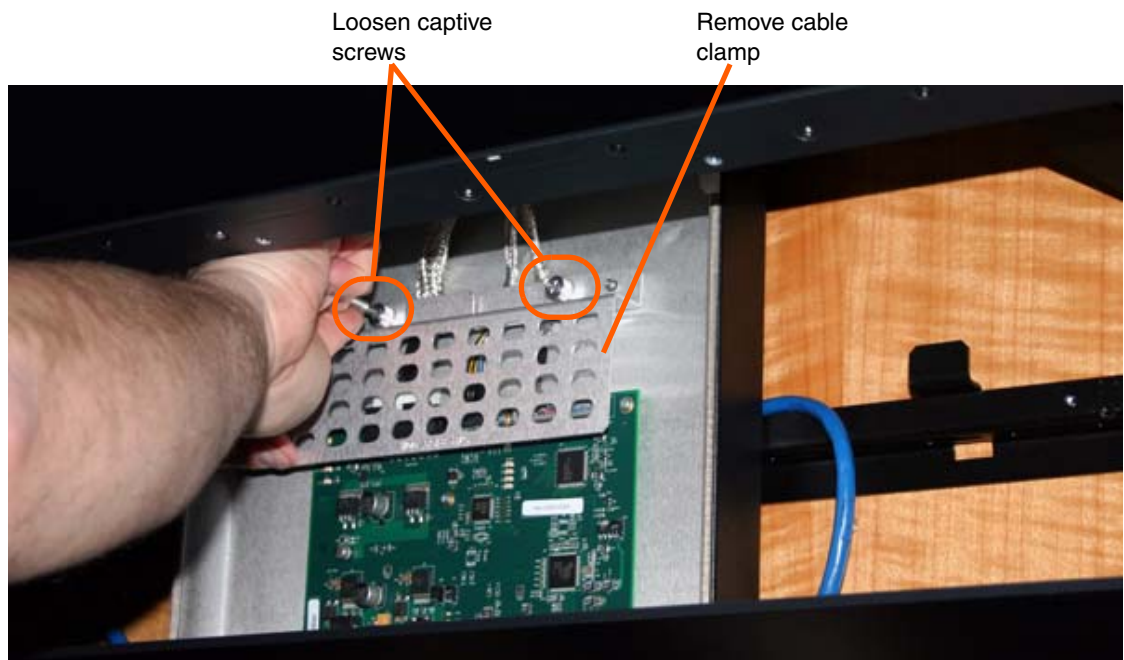
- 3 Unplug the power, video and data cables.



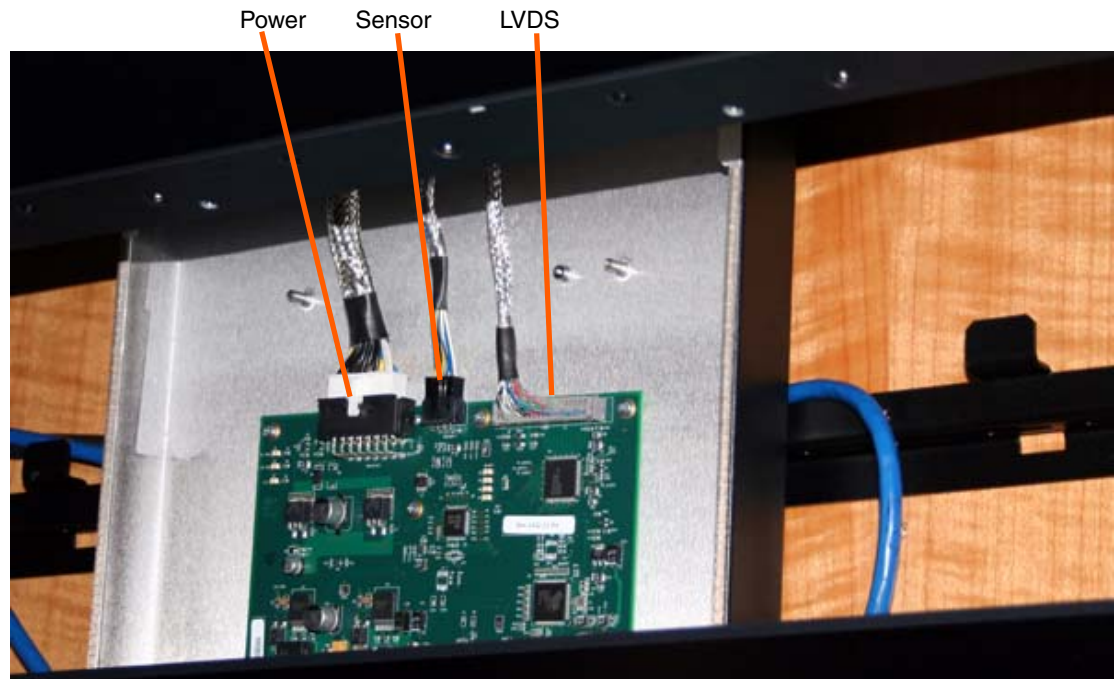
- 4 Loosen the two captive screws on both sides of the interface board assembly.
- 5 Slide the interface board assembly towards the bottom of the LCD.
- 6 Gently rest the interface board on the top of the LCD below. If there is no LCD below, manually support the interface board while performing steps 7-8.

Caution: It is recommended that you do not pull the interface board assembly out in front of the LCD below while you work on it, as it could scrape against the LCD.

- 7 Loosen the two captive screws at the top of the assembly and remove the cable clamp.



- 8 Unplug the power, sensor and LVDS cables.



- 9 Remove the old interface board assembly and place the new one in the LCD.
- 10 Reconnect the power, sensor and LVDS cables. With the LVDS cable, press in the middle of the connector until the side tabs lock. (You will hear a click when it locks.)
- 11 Reinstall the cable clamp and tighten the two captive screws. Ensure that the cables do not cross one another underneath the cable clamp.
- 12 Make sure the braided cables are contained in the interface board assembly when replacing in the LCD.

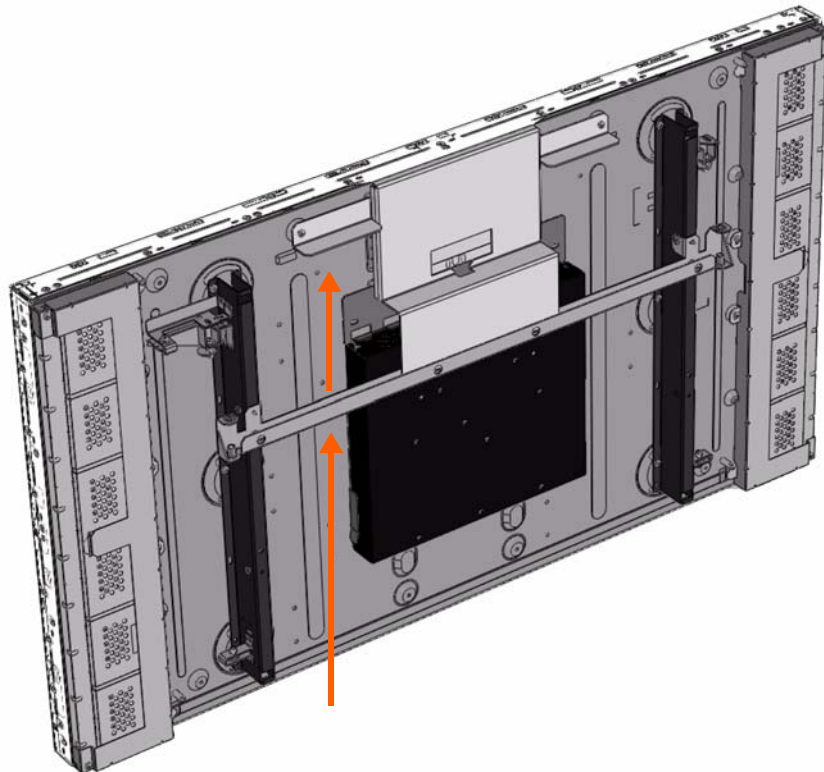
- 13** Holding the assembly at the sides, slide it up in between two metal “ears” on the back of the LCD module.

Slide the assembly between the metal ears

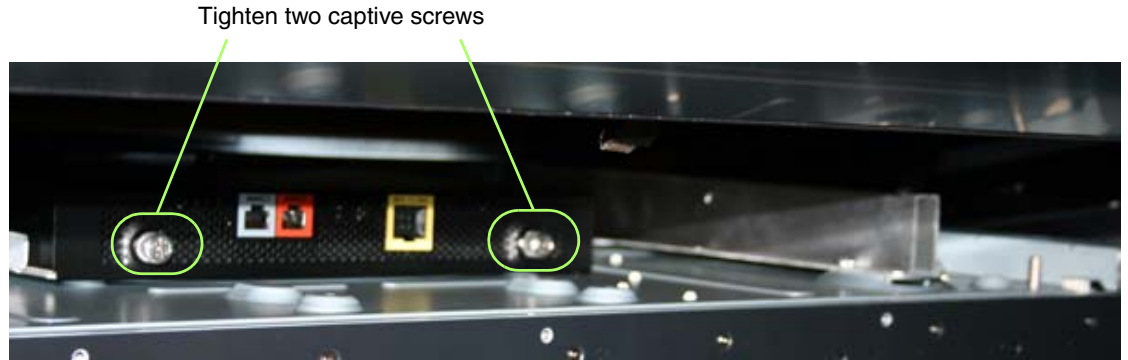
View as seen from the bottom of the LCD looking up



- 14** Continue sliding the assembly up until you feel the bar of the LCD mounting structure. Make sure you carefully slide the assembly underneath that bar and up until the captive screws can engage.



- 15** Retighten the two captive screws on the bottom of the assembly.



- 16** Plug in the power, video and data cables.

- 17** Run the cables through the mount channel of the LCD mount.



- 18** Move the LCD out of service mode and return it to operational mode.

Contact Information

For more information, contact us at:	Planar Systems 1195 NW Compton Drive Beaverton, OR 97006-1992
via e-mail:	ts@planar.com
via phone:	+1 503-748-5799
via fax:	+1 503-748-5532
To access our website:	Go to http://partners.planarcontrolroom.com
