



3D GlobeView

80" passive 3D-Stereo Monitor

USER MANUAL



- UHD resolution (2D) 3,840 x 2,160 @ 120 Hz 10bit
- UHD resolution (3D) 3,840 x 1,080 @ 90 Hz 10bit
- 3D technology: line-by-line polarization
- Optional head tracking and gesture control
- Optional electrically height-adjustable mounting solution
- Optional wall bracket



4K passive stereo LCD display for seamless switching between 2D and continuous 3D stereo in high quality with passive glasses.

2D Monoscopic Or 3D-Stereo

INHALT

Advantages of stereoscopic visualization	04
Delivery contents	05
Unpacking the monitor	06
Installing the monitor	08
Control elements of the monitor	10
Improving the stereo effect	12
Which graphics card?	13
Enable 3D on your NVIDIA graphics card	14
Enable 3D on your AMD Radeon graphics card	15
Safety instructions	16
Cleaning and care	17
Legend	18
Optional accessories	19
Technical data	20
EC declarations of conformity	21
Warranty & Service case	22

2D OR 3D-STEREO WITH ONE CLICK

For the highest demands in 3D stereo applications

The 3D GlobeView can display 3D stereo and conventional 2D content with all the features of a multifunctional, ultra-high resolution display. The display is compatible with all major graphics cards and 3D visualization software tools from various applications, including:

- Data Visualization
- Molecular Modeling
- Engineering and Design
- 3D Production Review
- QC/QA Visualization for 3D Printing
- Oil and Gas Exploration
- Simulation and Training

Highlights

- 4K resolution 3,840 x 2160 @ 90 Hz in 2D mode
- Resolution 3,840 x 1080 @ 90 Hz in 3D stereo mode
- Seamless switching between 2D and continuous 3D stereo
- Passive glasses offer hours of wearing comfort
- Much brighter 3D stereo than active shutter panel technology

Lightweight, passive 3D Glasses

The 3D GlobeView uses passively polarized glasses that prevent fatigue and eye strain when viewing 3D images, ensuring continuous and comfortable use for many hours. Made from durable and robust nylon material, it is lightweight, cost effective and requires no electronic parts.

Stunning 3D Realism at 4K Resolution

The 3D GlobeView stereo monitor uses a film-like, patterned light-delay technology to display two images simultaneously on a single screen. All pixel rows are alternately left or right circularly polarized so that they are only visible to one eye at a time. At full 3D stereo resolution, this results in 3840 pixels horizontally and 1080 pixels vertically. The result is a very bright and sharp 3D stereo image, especially in comparison with active 120Hz monitors and the associated (battery-powered) active shutter glasses.



SAFETY NOTE

It can happen that prolonged work at a VDU workstation causes discomfort or eye fatigue. In this case, we recommend taking a break from screen work.

THE DELIVERY CONTENTS, STANDARD

The delivery 3D GlobeView package includes:

- 1 1 x 3D GlobeView Monitor
- 2 1 x Remote control
- 3 1 x Power cable approx. 3,0 m
- 4 10 x Circularly polarized 3D glasses
- 5 10 x Microfiber glass cleaning cloth
- 6 10x Microfiber storage bag for glasses

Please check that the package is complete.

If a component is missing or damaged, please contact Schneider Digital.





UNPACKING THE MONITOR

It is recommended that at least two people transport, unpack and set up the 3D GlobeView monitor.

- a. The 3D GlobeView monitor is supplied in cardboard packaging and a wooden crate to prevent damage to the panel and the monitor from tipping over.
- b. Place the 3D GlobeView transport case in an upright position on a flat surface. If the crate falls over, this may result in injury or damage to the monitor.
- c. The door is located on one side of the wooden box. Open this door and remove the cardboard packaging with the 3D GlobeView. Place the box in an upright position and secure it to prevent it from falling over. Never transport or store the monitor lying down! **Risk of panel breakage!**
- d. There are four white plastic latches on the underside of the box. Remove these and lift the upper part of the shipping box off the lower part.
- e. To lift and transport the monitor, use the handles on the back. Please do not touch the screen with your bare hands as this could damage it.
- f. Due to the stereo technology, the 3D monitor can only be used in landscape format.

ATTENTION! Please keep the complete shipping packaging (wooden crate, outer box, foam padding) for any returns in the event of support or warranty claims!



Works without special drivers
with Microsoft / LINUX / macOS

3D GlobeView Plug & Play

INSTALLATION OF THE 3D GLOBEVIEW 80" MONITOR

Terminal panel for power supply with power switch and signal inputs.



a. Connect the 3D GlobeView monitor to the graphics card of your workstation via DisplayPort or HDMI 2.0 cable.

b. Connect the monitor to the mains using the power cable supplied.

c. Start up the workstation, connect to the Internet and download the latest driver for your graphics card:



<https://www.schneider-digital.com/de/support-downloads/download-center/?url=/driver/Grafikkarten>

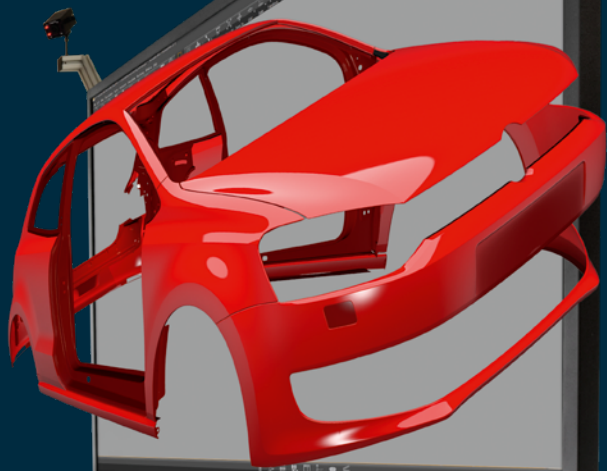
d. Under the same link you will also find the respective uninstaller for the old driver, which you should also download and run beforehand.

e. To check the successful stereo setup, load and open the following file:



https://www.schneider-digital.com/wp-content/downloadcenter/Tools_Ressourcen/STEREO/QuadBuffer_Stereo-Test.zip

Redblue



With its eye-friendly, passive line-by-line polarizing filter technology, the new 3D GlobeView monitor offers the highest quality for stereoscopic display at the workplace.

3D GlobeView





MONITOR CONTROL ELEMENTS

The controls of your 3D GlobeView 80" monitor

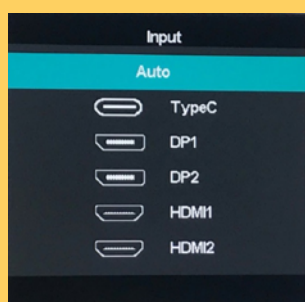
The 3D GlobeView monitor is designed to achieve the best performance and the best possible picture at a resolution of 3840 x 2160 and a frequency of 90 Hz. At a lower frequency, the moving image or video displayed may appear distorted or blurred.

The color profile, picture position and frequency settings are best made using the monitor controls. You can make the changes using the 5 buttons (INPUT (1), UP (2), DOWN (3), MENU (4), ON/OFF (5)) on the back of the monitor (below the connection strip) or using the remote control as follows:

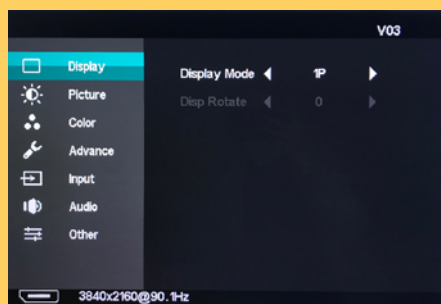
MONITOR BUTTONS (M) / REMOTE CONTROL (F)

1. Press the INPUT (M) / SRC (F) button. Use the UP/DOWN buttons (M, F) to select the type of port and finally press the MENU button (M) / OK button (F) to end the process.
2. Press the MENU (M) / MENU (F) button to call up the Menu screen (OSD). There are several menu items that can be changed using the UP/DOWN buttons (M, F).
3. Select the item from the menu whose settings you want to change. Press the MENU button (M) / OK (F) again. Use the UP/DOWN buttons (M, F) to make the desired setting.
4. Finally, press the INPUT (M) /EXIT (F) button to end the process. All changes made will then be saved. If the menu disappears during adjustment, this is because the OSD menu display time has elapsed. The MENU button (M, F) can also be used to return to the previous menu.

1



2



3



CONFIGURATION IN WINDOWS

Customization of the 3D GlobeView 80" via the system settings

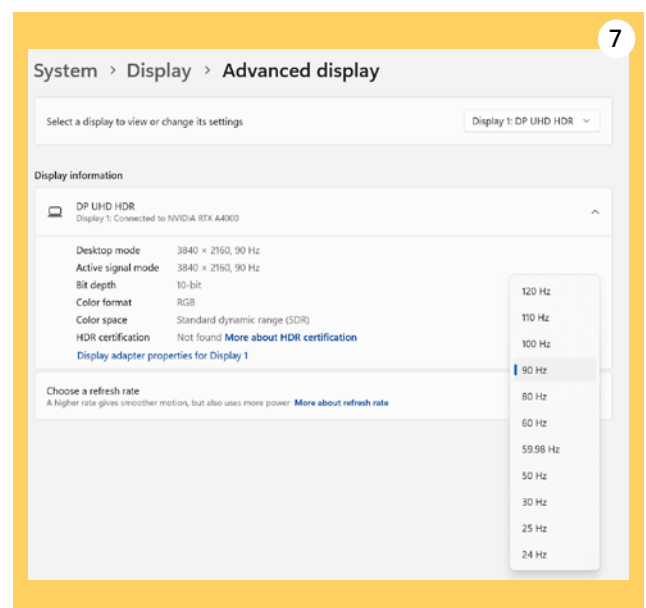
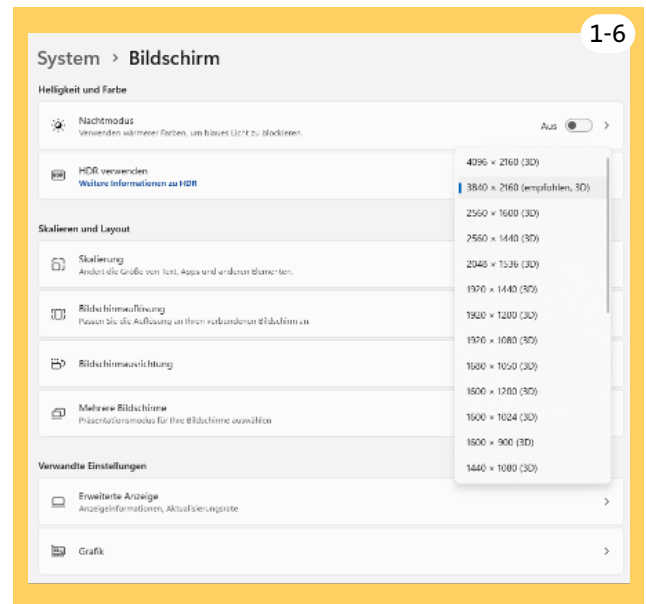
The screen can also be adjusted using Windows elements in the following way:

1. Select
Start > Settings > System > Display.
2. Select the display you want to change.
3. Open the display settings.
4. Scroll to Scaling and layout.
5. Search for display resolution and then select an option.
In the Multiple screens tab (Windows 11), activate the 3D display mode.

The best performance for the 3D GlobeView monitor and the best possible picture is achieved at a resolution of 3840 x 2160 and a refresh rate of 90 Hz (10bit color depth, RGB color profile, full dynamic output range).

At a lower resolution or refresh rate, the content may appear distorted or pixelated. The refresh rates higher than 90 Hz (up to 120 Hz) can alternatively be selected for video or other applications, e.g. when objects need to be moved quickly. In this case, however, only limited color accuracy/color reproduction can be achieved (YCbCr444/YCbCr422 color profile with 8/10bit color depth (limited dynamic output range) or RGB color profile with 8bit color depth (full dynamic output range)).

6. Scroll to Related settings and click on Advanced display.
7. Click on the Screen tab and select the screen refresh rate of 90 Hz.



IMPROVEMENT OF THE STEREO EFFECT

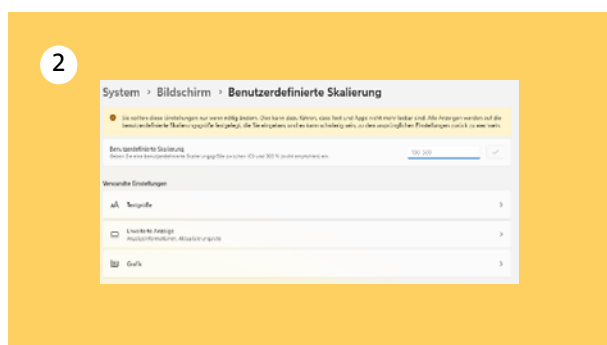
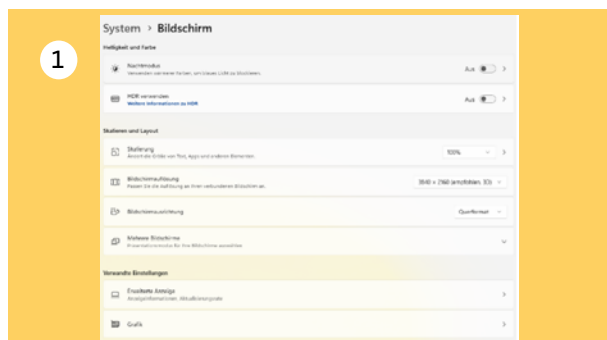
Scaling of text and apps under Windows settings

If you are experiencing a problem with stereo mode, please check whether the scaling for the display of text, apps and other elements has been set to a value other than 100%. If so, change the scaling to 100%. Under certain circumstances, this may resolve the error.

However, the text scaling itself should not cause any problems.

If the text size feels too small when navigating, you can enlarge the text in the Windows settings. This applies, for example, to title bars, text in menus and icon texts.

1. Select
Start > Settings > System > Display > Scaling.
2. Scroll to Related settings and click on Text size.
3. Under Text size, drag the slider to the right to increase the size of the sample text. When you are happy with the text size, click on Apply.



GRAPHICS CARDS FOR 3D GLOBEVIEW

You can find suitable
graphics cards here

For correct image display, please ensure that the 3D GlobeView monitor is connected directly to the GPU/graphics card and not to the integrated video port of the mainboard (System - Display - Advanced display - Display information, see below) and that you are using the latest drivers for your graphics card.

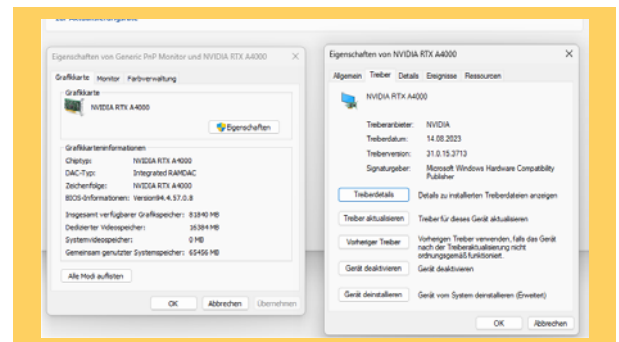
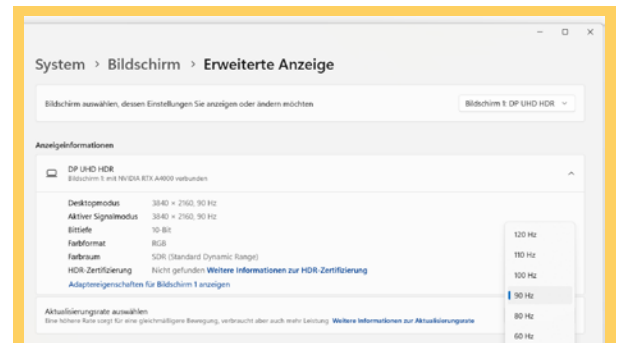
A list of professional graphics cards that support Quad Buffer Stereo, as well as the latest drivers for them, can be found at the following link:

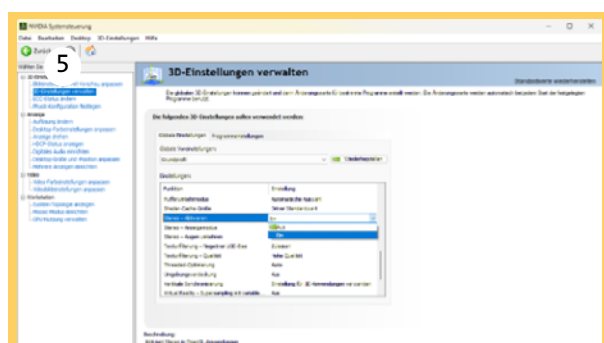
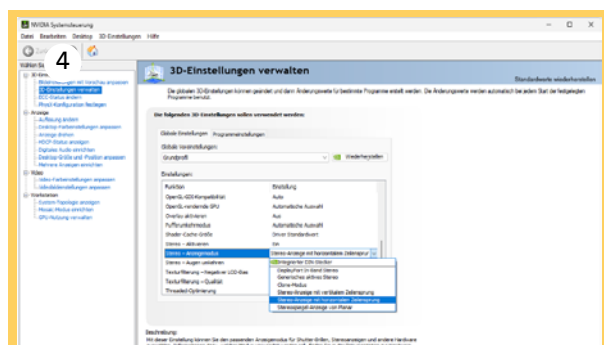
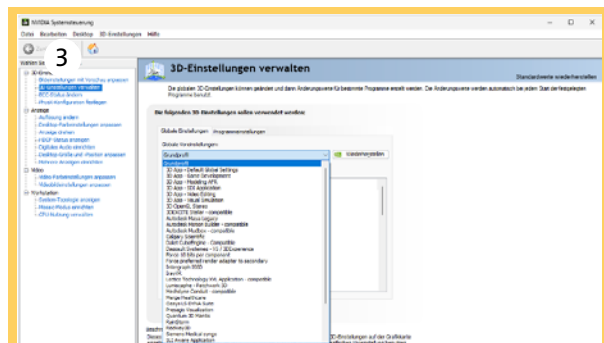
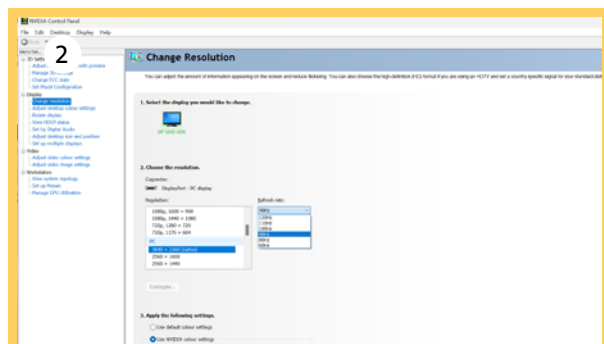
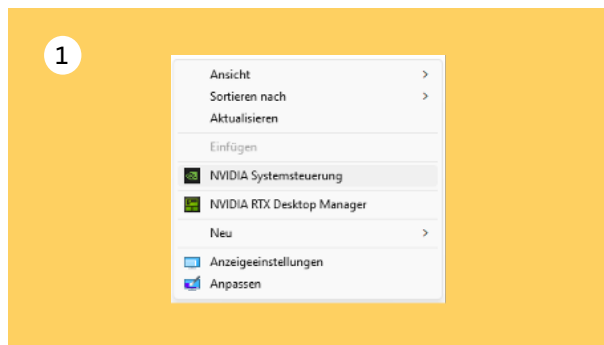
https://www.schneider-digital.com/wp-content/downloadcenter/Tools_Ressourcen/3D-PluraView/3D_PluraView_supported_Graphics-Cards.pdf

Alternatively, you can also use other graphics cards for your stereo applications if the “Horizontal Interleaved” function can be set in their driver.

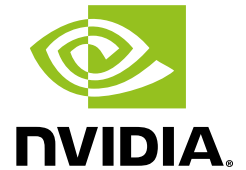
The Quad Buffer Stereo Test web application allows you to check whether the stereo mode is working correctly:

https://www.schneider-digital.com/en/downloads-support/download-center/?url=/Tools_Ressourcen/3D-PluraView/Setup_nVIDIA_Quadro_RTX-PRO





ACTIVATE 3D



Enable 3D on your
NVIDIA graphics card

The NVIDIA graphics driver settings and the NVIDIA hardware can be configured using the NVIDIA Control Panel. To enable stereo mode, please perform the following steps:

1. Right-click on the desktop and select the option for the NVIDIA Control Panel.
2. In the navigation tree window of the NVIDIA Control Panel, select the Change resolution option under Display. Select the desired resolution and refresh rate. Under Apply the following settings, configure the desired NVIDIA color settings.
3. Under 3D settings, select the Manage 3D settings option. Under Global settings, you can select the software-specific technology.
4. In the drop-down menu next to Stereo - Display mode, select the option for stereo display with horizontal interlacing.
5. Scroll down to Stereo - Enable and select On from the drop-down menu.
6. In the menu on the left under 3D settings, select the option Customize image settings with preview and select Use advanced 3D image settings.

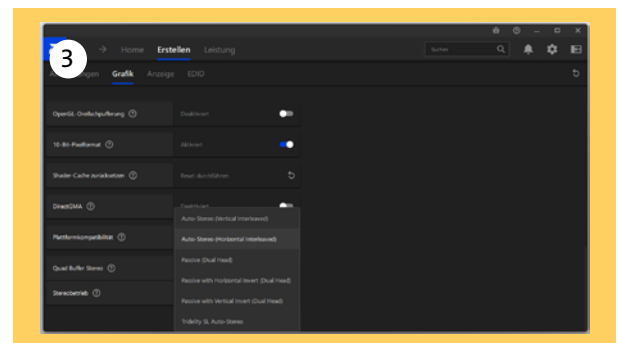
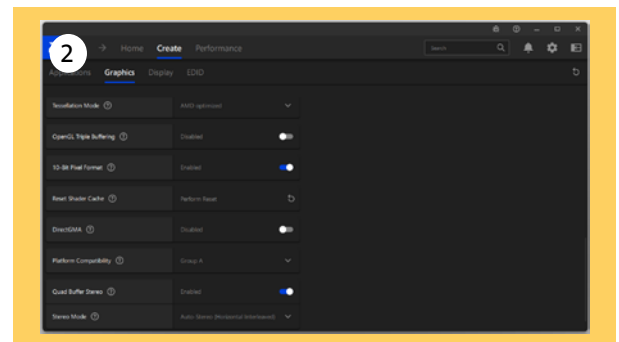
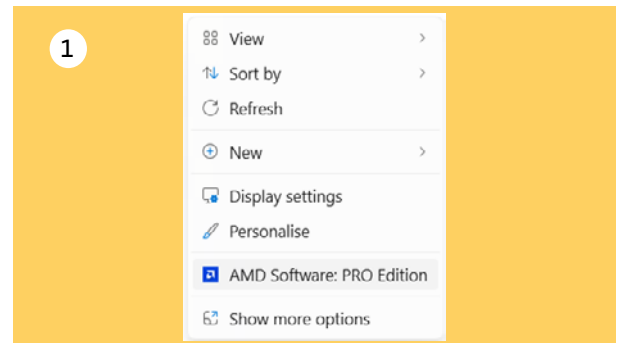
ACTIVATE 3D



Enable 3D on your
AMD Radeon graphics card

To activate stereo mode, please carry out the following steps:

1. Right-click on the desktop and select the option for the AMD software.
2. Click on Performance > Advanced settings > Graphics. Scroll down to Quad Buffer Stereo (if available) and activate this mode. The stereo display with horizontal interlacing also works without this function.
3. Select the Stereo mode option in the menu on the left under Graphics and select Auto Stereo (Horizontal Interleaved) from the drop-down menu.



SAFETY INSTRUCTIONS

WARNING! IN CASE OF DANGER IMMEDIATELY SWITCH OFF THE MONITOR!

If the monitor produces abnormal smells, noises or smoke, switch off the 3D GlobeView Monitor and disconnect it from the power supply. Please contact your dealer or service team at Schneider Digital. Further continued use of the monitor may be dangerous or may cause fire or electric shock.

MONITOR POSITIONING

Place the monitor on an even and stable surface. Do not place any heavy objects on the monitor. Lay cables and lines in such a way that no one can walk on it or trip over them.

NOTE THE CORRECT OPERATING VOLTAGE

Please adhere to the specified operating voltage values between 110 – 250 V. Operating at other than specified values may cause fire, electric shock or malfunction of the monitor.

PROTECT CABLES

Protect your cables from mechanical load (pulling force, pressure). Do not use a damaged power cord or plug, as otherwise fire, short circuits or a life-threatening electric shock may result.

ENVIRONMENT CONDITIONS

Do not place the monitor in disadvantageous ambient conditions such as high humidity and / or severe temperature fluctuations or where it may be exposed to spraying water, exhaust emissions, as otherwise fire, short circuits or other monitor damage may result. Do not expose the device to direct sunlight or other light sources.

ENSURE GOOD VENTILATION

Ventilation slots and openings are provided for ventilation to protect the monitor from overheating. These must not be covered or blocked, as otherwise fire danger exists. To ensure sufficient ventilation in case of wall mounting, maintain a distance of at least 40 mm between the monitor and the wall.

REMOVE THE CABLES BEFORE TRANSPORTING THE MONITOR

If you need to move the monitor, switch it off, pull out the power plug and ensure that the graphic card data-cable is disconnected. Moving the monitor with a connected power plug may cause damage of the monitor ports or cables, cause fire or short circuits.

PLUGGING AND UNPLUGGING

Connect the monitor to the PC and plug it into the power supply only after placing the monitor in its final location. In case you do not plan to use the product for an extended period of time, it is recommended to disconnect the power cord from the power socket to avoid any risk of accidents. When plugging or unplugging the power cable always hold the power cable by the plug. Do not pull the power plug out of the media head socket by pulling the supply cable cord, as otherwise danger of fire or electric shock exists. The Display Port plug has an additional lock button, which you need to press down and hold before unplugging the cable.

NEVER OPEN THE DEVICE COVER

Live parts inside the unit are under voltage and freely accessible. By removing the cover you expose yourself to the risk of electric shock or fire.

SAFETY INSTRUCTIONS

NEVER TOUCH THE POWER PLUG WITH WET HANDS

Never touch the power plug with wet hands when removing or plugging the plug into the outlet. Handling the plug with wet hands might give you an electric shock.

NOTE TO 24/7 OPERATION MODE

This product is not designed for 24h/7 days operation mode

ADDITIONAL INFORMATION

INSTRUCTIONS FOR ERGONOMIC USE

Do not install or use the monitor against a glaring background or in a dark room to avoid any risk of eye fatigue. To ensure a viewing comfort, the center of the monitor needs to be at viewer eye level and the distance between the monitor and the viewer should be at least 150 cm or more. Using the monitor for an extended period, take at least a ten-minute break after every hour to ease eye strain.

CUSTOMER SERVICE

GENERAL INFORMATION

In case you need to send the monitor for service and the original packaging is no longer available, please contact your dealer, who can further provide you with replacement for packaging.

CLEANING INSTRUCTIONS

CAUTION

Always switch off and unplug the monitor from the power source before you clean it. If during cleaning some water, other liquid or solid items gets accidentally inside the monitor, switch it off immediately, unplug the power cord, contact your dealer or service team of Scheider Digital.

INSTRUCTIONS

Do not clean the monitor surface with rough cloth or other harsh materials. Never use for this purpose strong detergents as listed below. **The following cleaning products destroy the screen surface and react directly with the monitor finish, therefore their use for cleaning purposes is strictly prohibited:** thinner or solvent / scouring cream / spray cleaner / wax / spirit or benzine / acids or bases

COVER

Dust and small stains can be carefully removed with a damp cloth. To moisten the cloth, use diluted solution of mild detergent.

LCD SCREEN

Use a soft dry cloth for regular cleaning of the monitor, and, if needed, use diluted solution of mild detergent. Wet a soft and dry cloth in water and wring thoroughly to clean the exterior of the product. Do not spray water or detergent directly on the display. Do not use paper towels to clean the monitor, as these may damage or scratch the LCD screen panel 3D film. The polarization glasses must only be cleaned using the microfiber eyeglass cleaning cloth provided in the 3D GlobeView delivery package.

LEGENDE



OPTIONAL, ELECTRICALLY HEIGHT-ADJUSTABLE STAND

- 1** Massive, solid aluminum and steel construction
- 2** Completely mobile thanks to swivel castors
- 3** Height adjustment from 120 to 190 cm (center of the screen)
- 4** Lockable rear panel for remote controls or mini PCs
- 5** Electric height adjustment by remote control
- 6** Space for workstation or mini PC

3D GLOBEVIEW 80" CONNECTIONS

- 7** 1x Typ C 1.4
- 8** 2x HDMI 2.0
- 9** 2x DisplayPort 1.4
- 10** 2x USB2
- 11** IEC plug (220V/110V)
- 12** Illuminated on/off switch
- 13** Remote control



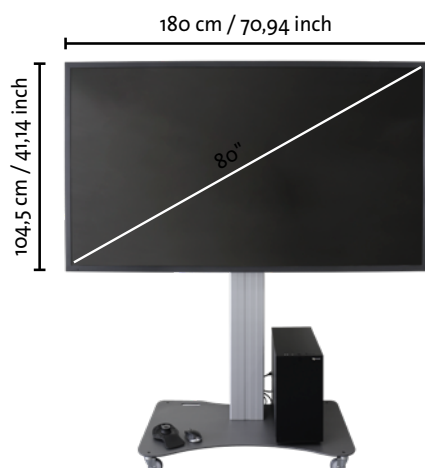
OPTIONAL ACCESSORIES

- 1 Mobile, electrically adjustable monitor stand with platform for holding computers
- 2 Wall mount
- 3 GlobeView polarized glasses, circular polarized with cleaning cloth and storage bag
- 4 Tracking camera
- 5 Tracking Targets





3D GlobeView



3D GlobeView Monitor Specifications

Display	80" (2.032 mm) Screen Size 3.840 × 2.160 Resolution, RGB stripe arrangement 1.07 Billion Colors (10-bit) 400 cd/m2 Brightness (Center 1point, Typ.) Aspect Ratio: 16:09
	LED BackLit-Technology: Full Array Local Dimming 8 ms Response Time G/G 178° /178° Viewing Angle (H/V)
	Contrast Ratio: 1.200 : 1
Frequency	Vertical up to 120Hz, Horizontal 74 MHz
Pixel pitch	0,453 x 0.453 mm
Monitor type	Passive 3D stereo monitor
3D technology	Passive stereo, line-by-line circular polarization
3D-Characteristics	200 cd/m ² Brightness with glasses 3.840 x 1.080 per eye resolution
3D-Formats	Horizontally line interlaced
Operating Systems	Windows / Linux / macOS-Compatibility
Certification	CE
Power supply	Internal power supply, 100-230V, 50-60Hz
Power Consumption	Power Consumption 167,1W typical; Annual PowerConsumption 300,2 kWh / year
Surface Treatment	Hard coating (2H) Anti-glare treatment of the front polarizer (Haze 1% Typ)
Weight	92 kg
Measurements	1.802 x 1.050 x 139 mm (W x H x D)
Interfaces	1x USB-C 1.4, 2x HDMI 2.0, 2x DisplayPort 1.4, 2x USB 2.0
Technical Notes	Remote control
Warranty	12 months bring-in service
Ideal viewing distance	~ 150 - 600 cm
Visable display size	1.740 x 978 mm
VESA mount	600 x 400 mm

EC DECLARATIONS OF CONFORMITY

in accordance with the EC Low Voltage Directive 2014/35/EU
in accordance with Annex III B; dated February 26, 2014

We hereby declare that the product described below complies with the basic safety and health requirements of the EC Low Voltage Directive in its design and construction and in the version placed on the market by us. If the product is modified without our agreement, this declaration shall become invalid. The manufacturer bears sole responsibility for issuing this declaration of conformity.

MANUFACTURER/AUTHORIZED REPRESENTATIVE

Schneider Digital Josef J. Schneider e. K.
Konrad-Zuse-Straße 1
D-83607 Holzkirchen

PRODUCT MODEL

A17115 Passiver Stereo-Monitor 3D GlobeView 80" 4k. UHD, Manufacturer number: 17115

SUBJECT OF THE DECLARATION

- Stereo monitor for photogrammetric image evaluation

COMPLIANCE WITH OTHER DIRECTIVES/REGULATIONS THAT ALSO APPLY TO THE PRODUCT IS DECLARED

EMC Directive (2014/30/EU) from February 26, 2014
RoHS Directive 2011/65/EU of June 8, 2011

APPLIED HARMONIZED STANDARDS, IN PARTICULAR

EN 62368-1
EN 61000-6-2
EN 61000-6-4
EN 55024
EN 50581
EN 82079-1

OTHER TECHNICAL STANDARDS AND SPECIFICATIONS APPLIED

-
Miesbach, 02.05.2023
Personal details of the signatory: Josef J. Schneider CEO



WARRANTY

Schneider Digital grants a 12-month manufacturer's warranty on the 3D GlobeView stereo monitor.

SERVICE ADDRESS

IN THE EVENT OF A DEFECT IN YOUR 3D GLOBEVIEW, PLEASE CONTACT

Schneider Digital
Josef J. Schneider e.K.
Konrad-Zuse-Straße 1
D-83607 Holzkirchen

Telephone: +49 (8025) 9930-0
support@schneider-digital.com

WEEE registration no.: DE 61056879
CE mark

YOUR NOTES

[illegible]

SCHNEIDER DIGITAL
Josef J. Schneider e.K.

Konrad-Zuse-Straße 1
D-83607 Holzkirchen

Tel.: +49 (8025) 9930-0
Fax: +49 (8025) 9930-299
www.schneider-digital.com
info@schneider-digital.com

Partner of:



3D GlobeView