

RADEON PRO

Solid State Graphics (SSG) Card
Driver Installation Guide



Radeon™ Pro SSG Card Driver Installation Guide

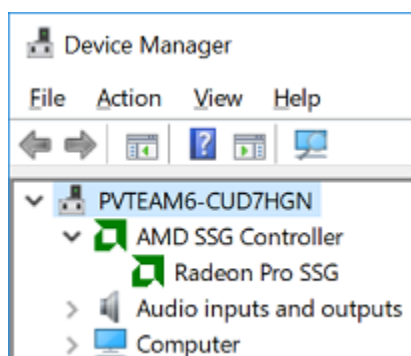
1 Requirements

To use the Radeon™ Pro SSG card, the following are required:

- Hardware
 - Capable PC system (e.g., X99 motherboard)
 - Radeon Pro SSG card with 4 x 512 GB NVMe drives
- Software
 - Microsoft® Windows® 10 (64 bit)
 - Latest Radeon™ Pro SSG display driver from <http://support.amd.com/en-us/download>

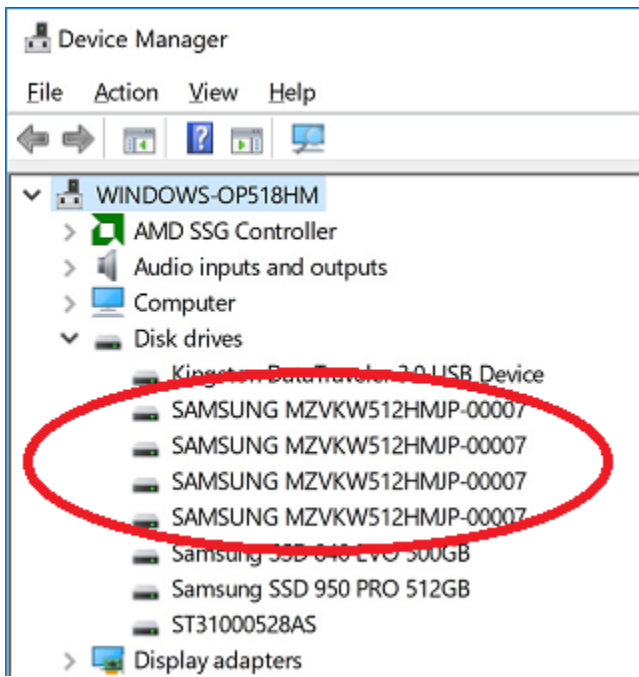
2 Driver Setup

Once the card is installed in the system, download the latest driver from amd.com and run the driver setup execution file. At the end of the driver installation, the device manager should feature one AMD SSG Controller device:

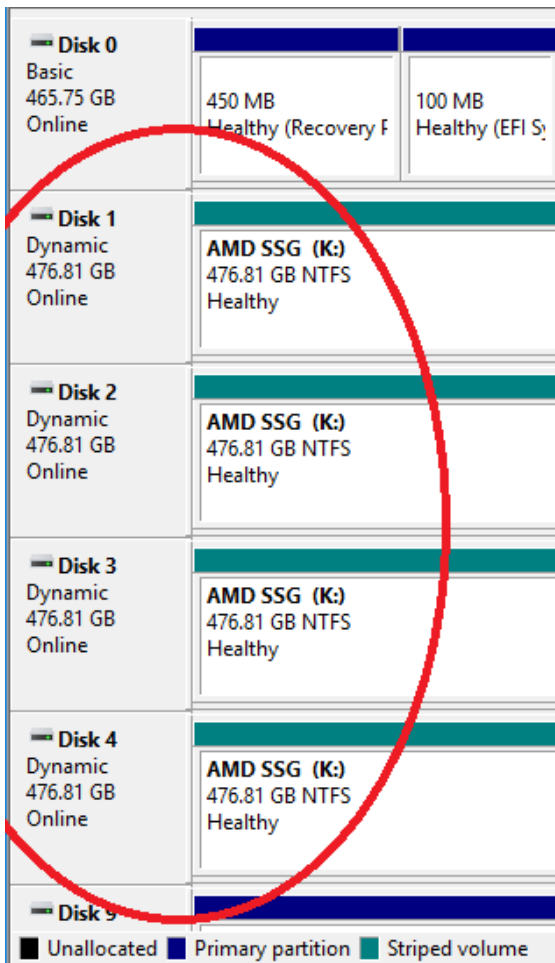


3 Radeon Pro SSG Storage Setup

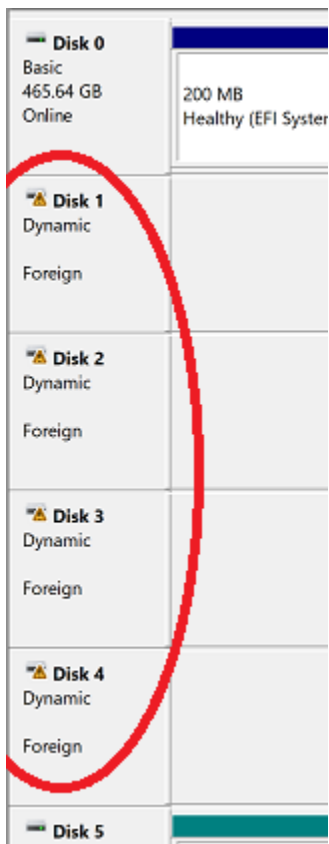
The Radeon Pro SSG card features four M.2 slots for NVMe drives. Once the NVMe drives are installed in these slots (the Radeon Pro SSG board comes with the drives already installed), they are visible to the Windows® operating system as four standard disk drives. To achieve the optimal performance, the installer will ask to set up the four drives as a single RAID 0 striped set (in which the data is striped between the drives).



Once set-up the RAID partition will show up below.



Note that it is possible to take the Radeon Pro SSG card from one system to another and preserve the RAID information and data. When moving the card from one system to another, in Disk Management the RAID partition will need to be "imported". Please be sure to turn off the system before moving the card to another system. Follow the hardware installation guide to ensure proper install.



Once the partition is imported (mouse right click in the Dynamic/Foreign area), it will be visible to the new system same as it was in the old system.

The drive is now ready to copy data.

Legal Attributions

DISCLAIMER

The information contained herein is for informational purposes only, and is subject to change without notice. While every precaution has been taken in the preparation of this document, it may contain technical inaccuracies, omissions and typographical errors, and AMD is under no obligation to update or otherwise correct this information. Advanced Micro Devices, Inc. makes no representations or warranties with respect to the accuracy or completeness of the contents of this document, and assumes no liability of any kind, including the implied warranties of noninfringement, merchantability or fitness for particular purposes, with respect to the operation or use of AMD hardware, software or other products described herein. No license, including implied or arising by estoppel, to any intellectual property rights is granted by this document. Terms and limitations applicable to the purchase or use of AMD's products are as set forth in a signed agreement between the parties or in AMD's Standard Terms and Conditions of Sale.

© 2017 Advanced Micro Devices, Inc. All rights reserved. AMD, the AMD Arrow logo, Radeon, Radeon Pro and combinations thereof are trademarks of Advanced Micro Devices, Inc. in the United States and/or other jurisdictions. Windows is a registered trademark of Microsoft Corporation in the US and other jurisdictions. Other names are for informational purposes only and may be trademarks of their respective owners.

