

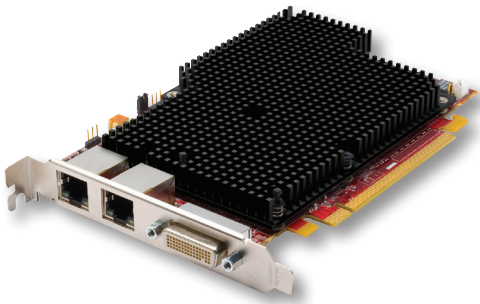


ATI FirePro™ RG220

Remote Workstation Graphics Card



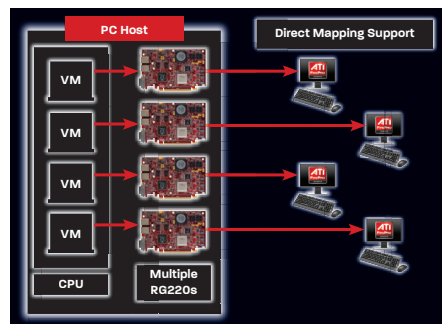
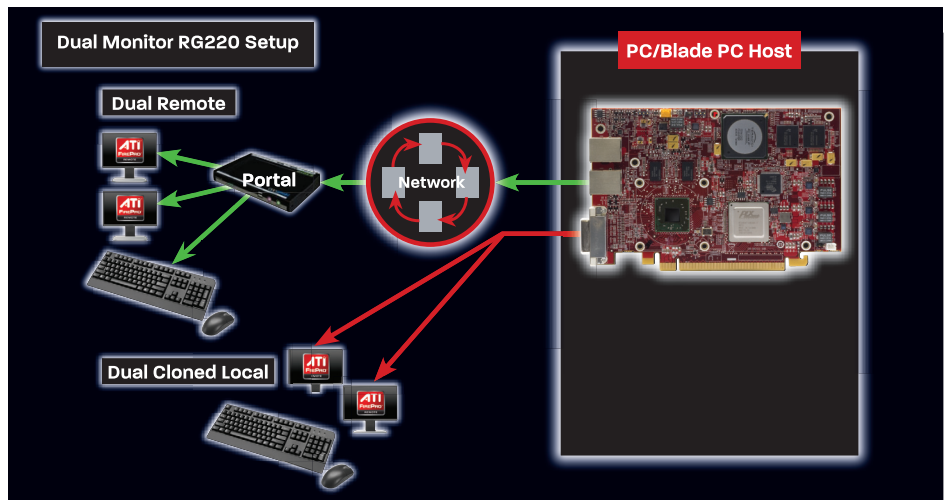
The Remote Enterprise Multi-Display Solution



- **Dual screen remote and/or local output through PCoIP remoting technology¹**
- **Entry level 2D and 3D workstation performance**
- **Average power <35W**
- **3 year limited warranty**
- **512MB video memory**
- **Stackable pair of cards for quad remote display output**
- **Max resolution support 1920 x 1200**
- **Hardware acceleration of DirectX® 10.1 & OpenGL® 3.3 advanced features**
- **PCI Express® 2.0 compliant**
- **PCoIP portal receiver required for remote capabilities**
- **Support for a direct 1-1 local to remote link**
- **Connect to either a PC or a virtual machine**

Enterprises have long needed a way to remote the compute and graphics experience for workstation and desktop users. Earlier attempts at this type of remote solution have been unsatisfactory by not only failing to provide a true PC experience with full multi-monitor 3D and video support but also often requiring bulky thin clients that consume significant power and demand frequent maintenance. A zero thin client device that replaces desktops and workstations could give IT managers a host of benefits: data security, ease of maintenance and updates, quieter, less cluttered environments, lower power usage in high density urban sites, and more.

The ATI FirePro™ RG220 is the first graphics card capable of supporting fully rendered multi-display workstation graphics plus full hardware display compression for remote 1-1 IP transmission, all in a zero thin-client device. By integrating PCoIP remoting technology¹, the ATI FirePro™ RG220 elevates remote users to an entirely new level of true PC experience. Each ATI FirePro™ RG220, with 512MB of memory, is capable of supporting dual 1920x1200 resolution displays, and where permitted by available PCIe® slots, two ATI FirePro™ RG220s can be linked together to support up to four remote displays. The full USB interoperability built into the ATI FirePro™ RG220 provides a seamless connection to any USB device (including keyboard and mouse). The ATI FirePro™ RG220 is also designed to work with any LAN/WAN or VPN environment.



Direct Mapping Support

With direct mapping support in the driver, an ATI FirePro™ RG220 can be connected directly to a virtual machine (VM). Multiple ATI FirePro™ RG220s can be installed in a single system, enabling support of multiple VMs and multiple users while still maintaining full 2D/3D and video acceleration. It's important to note that direct mapping is dependent on hypervisor support so the vendor should be consulted regarding its availability.



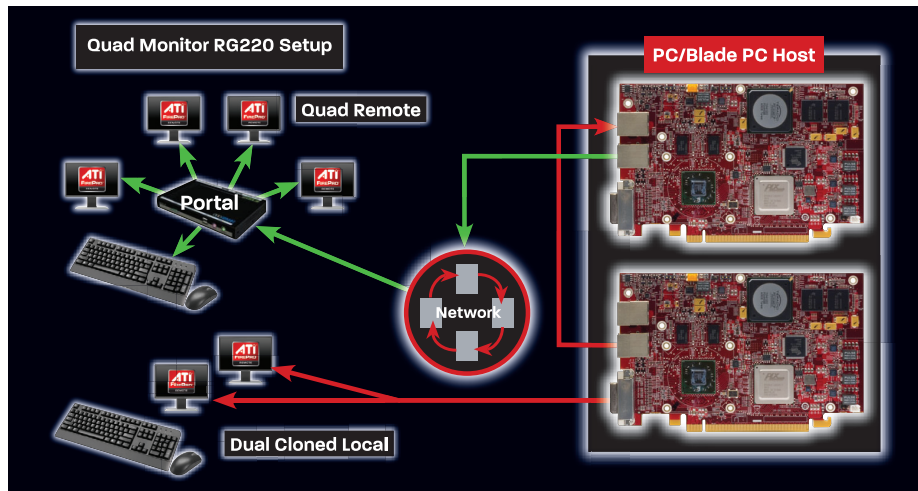


ATI FirePro™ RG220

Remote Workstation Graphics Card

Features	Benefits
Local Cloning of Remote Output	Allow for local server rooms to monitor and control the output of remote displays for debugging or remote access
Stackable Option	Combine two cards to support up to four 1920x1200 remote display output (subject to available PCIe® slots)
Support for Wake on LAN (WOL)	Ability to wake up a system from a remote location
Flexible Output Configurations	Capable of driving multiple high resolution monitors for massive screen space
Unified Driver Architecture	Helps simplify maintenance and system administration
Passive Cooling	Optimal cooling solution helps increase MTBF for high reliability and stability
512 MB On-Board Graphics Memory	High performance for graphics intensive applications including full Microsoft® Windows® 7 and Windows Vista® Aero support
Low Power Consumption	Enables use in smaller, more energy efficient systems
Direct Mapping Support	Direct support for multiple virtual machines with multiple ATI FirePro™ RG220 cards from a single system

ATI FirePro™ RG220 Product Details	
Features	<ul style="list-style-type: none"> → OpenGL® 3.3 support → DirectX® 10.1 compliant GPU → 512MB of memory → Dual 1920x1200 display output → Full support for USB devices
System Requirements	<ul style="list-style-type: none"> → Available PCI Express® 2.0 x16 lane slot → Microsoft® Windows® XP (32- or 64-bit) / Windows Vista® (32- or 64-bit) / Windows™ 7 (32- or 64-bit) → 256MB of system memory → CD-ROM drive for software installation → 350-Watt power supply or greater → PCoIP-capable thin client device required for remote connectivity
Output Connectivity	<ul style="list-style-type: none"> → Dual Ethernet ports plus DMS-59 for dual DVI-D output (no VGA support on the host output side). → Remote display options are determined by the output capabilities of the PCoIP thin client device
Warranty and Support	→ Three year limited product repair/replacement warranty



Innovation and Reliability from a Technology Leader

ATI FirePro™ professional graphics cards, including the ATI FirePro™ RG220, have been engineered to deliver innovation and reliability for a wide range of professional operating environments, including Microsoft® Windows® XP, Windows Vista® and Windows® 7. The unified driver, which supports all ATI FirePro™ professional graphics, helps reduce the total cost of ownership by simplifying installation, deployment and maintenance. In addition, ATI FirePro™ products incorporate a unique AutoDetect technology. As users open new 3D applications, or move between them, ATI FirePro™ graphics driver settings are automatically configured for optimized performance, no matter what the user's workflow demands.

¹ PCoIP portal required, sold separately. For a list of OEM solutions visit <http://www.teradici.com/pcoip/pcoip-products/oem-solutions.php>.



For more information, www.amd.com/firepro